



FIRST CROWN POINT ROAD

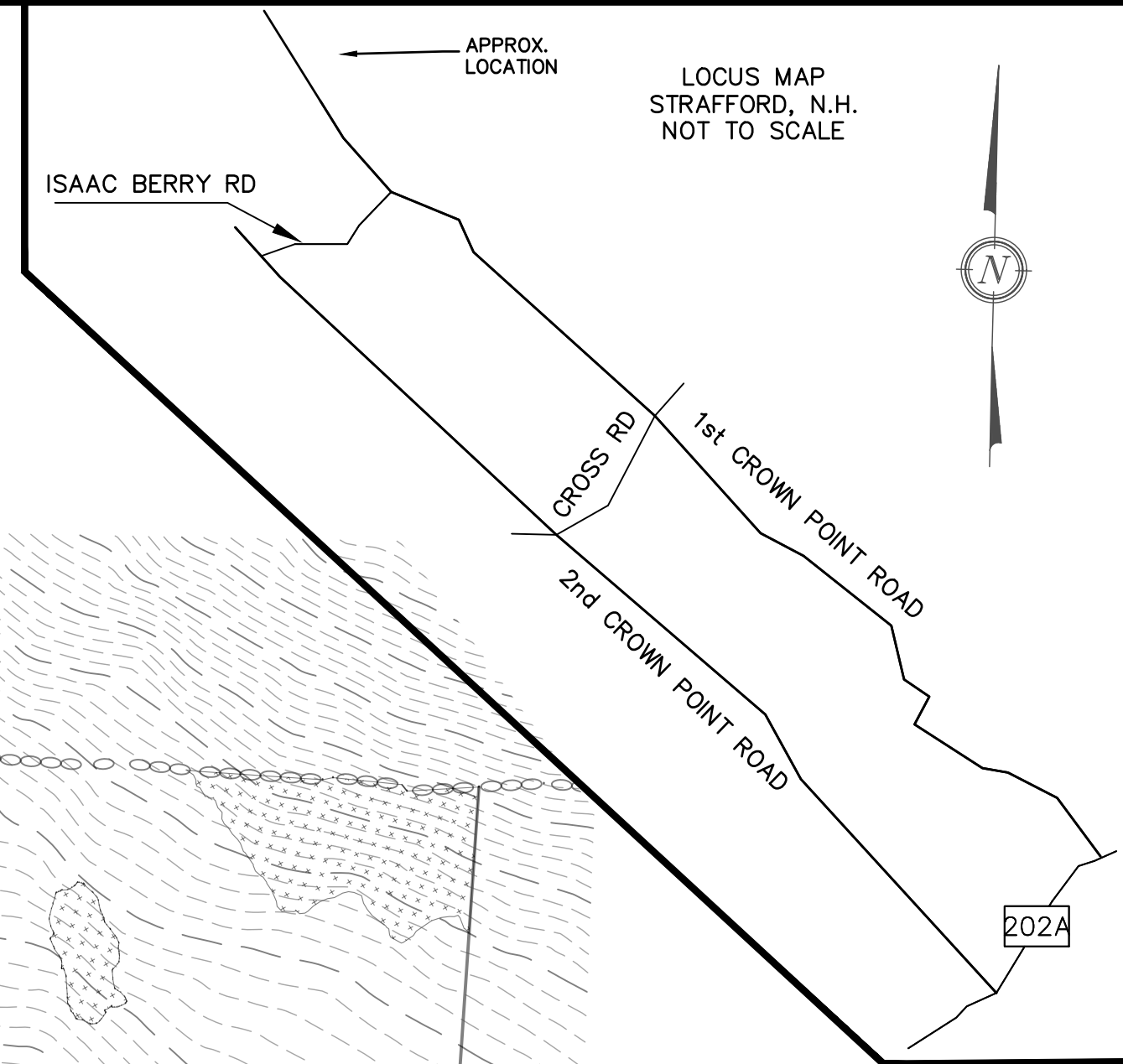
EXISTING DRIVEWAY

POTENTIAL SUBDIVISION LINE

EXISTING BARN

POTENTIAL SUBDIVISION LINE

EXISTING HOUSE



APPROX. LOCATION  
LOCUS MAP  
STRAFFORD, N.H.  
NOT TO SCALE

202A

NOTE:  
BOUNDARY INFORMATION SHOWN IS FROM SUBDIVISION AND LOT LINE REVISION PLANS APPROVED BY THE STRAFFORD, NH PLANNING BOARD AND RECORDED AT THE REGISTRY OF DEEDS. TOPOGRAPHIC INFORMATION IS BASED ON TOPOGRAPHY PERFORMED BY THIS OFFICE AND SUBMITTED TO THE STRAFFORD PLANNING BOARD IN 2008 AND ALSO ON PUBLICLY AVAILABLE LIDAR DATA. THE WETLANDS SHOWN WERE DELINEATED IN 2023 AND HAVE BEEN SURVEY LOCATED.

REVISION	DATE	DESCRIPTION
		CONCEPTUAL SKETCH LAND OF CHANTASIRI FIRST CROWN POINT ROAD STRAFFORD, N.H. TAX MAP 18, LOT 29-1
<b>BERRY SURVEYING &amp; ENGINEERING</b> 335 SECOND CROWN POINT RD. BARRINGTON, N.H. (603)332-2863		
SCALE :		1 INCH EQUALS 80 FEET
DATE :		JUNE 27, 2023
FILE NO. :		DB 2022 - 083