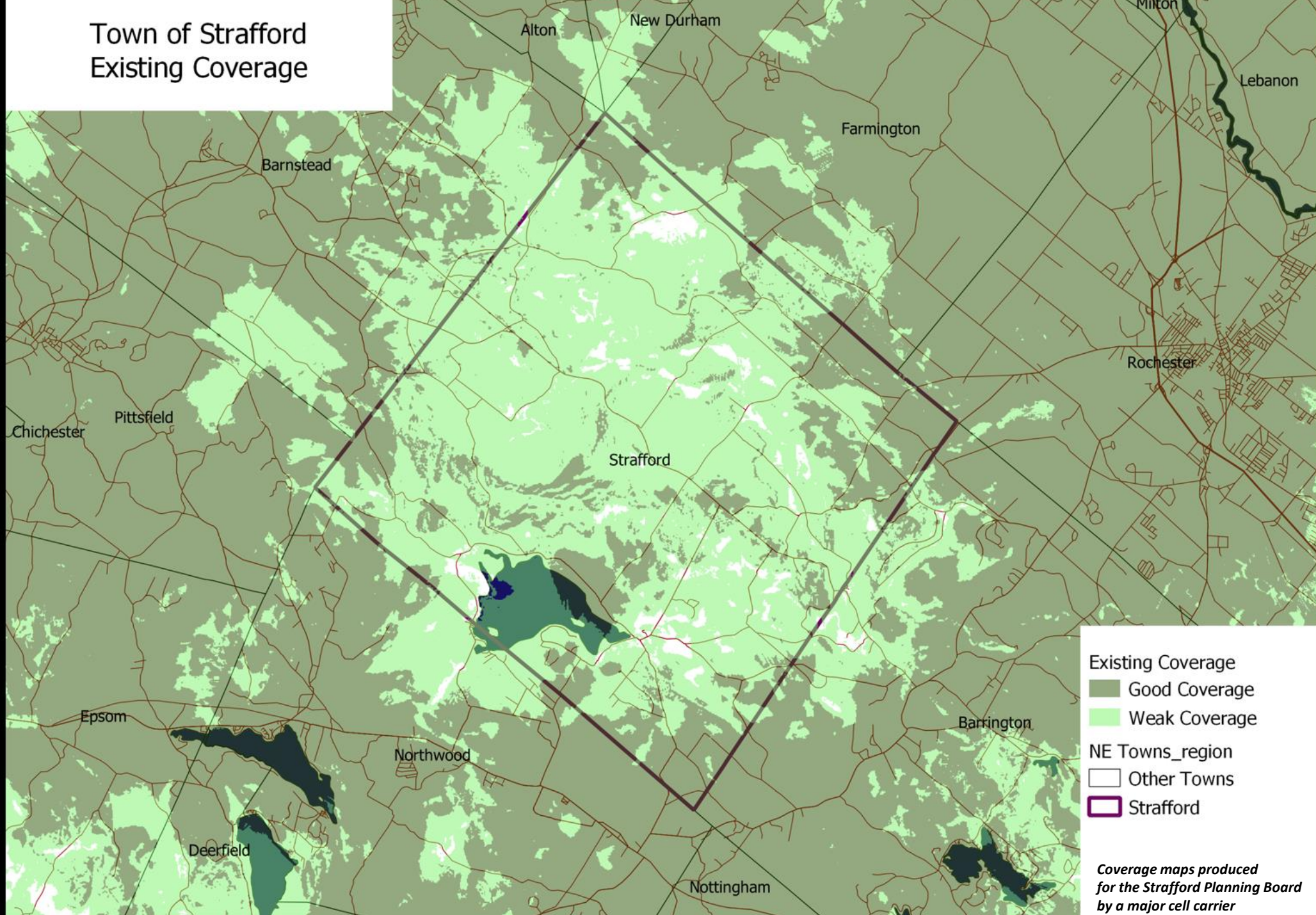


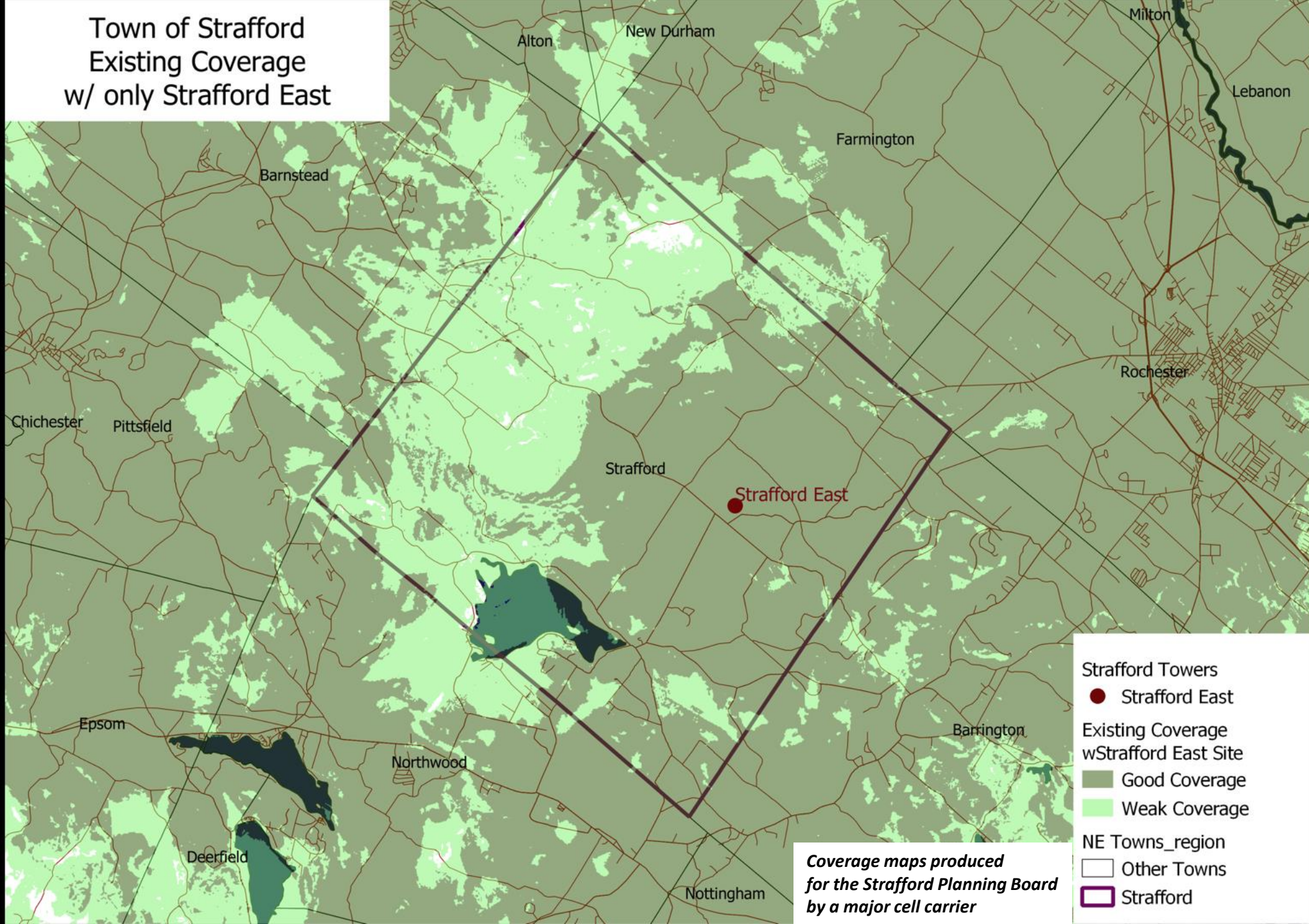
Town of Strafford Existing Coverage



Next



Town of Strafford
Existing Coverage
w/ only Strafford East



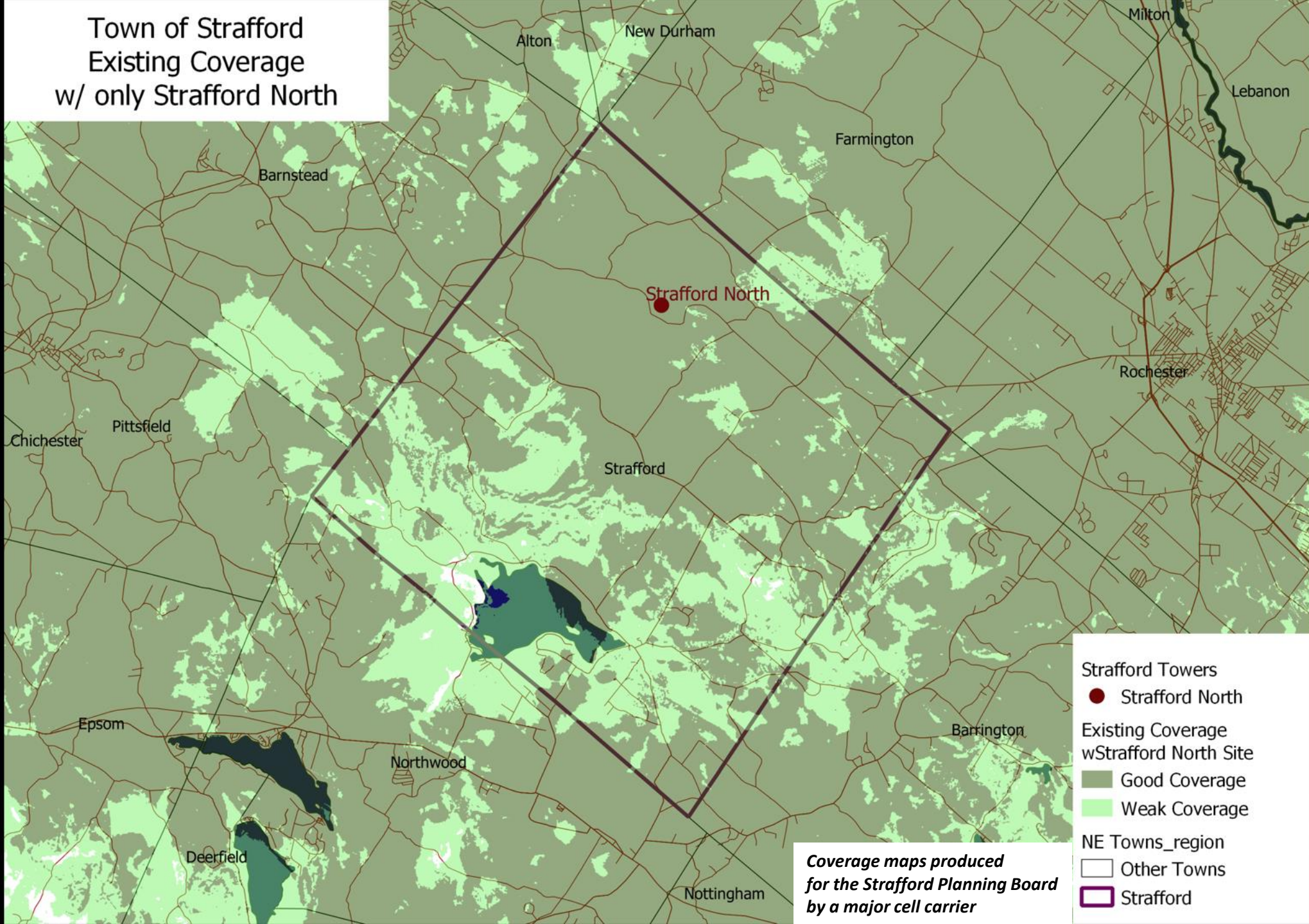
- Strafford Towers**
 - Strafford East
- Existing Coverage w/ Strafford East Site**
 - Good Coverage
 - Weak Coverage
- NE Towns_region**
 - Other Towns
 - Strafford

Coverage maps produced for the Strafford Planning Board by a major cell carrier

Next



Town of Strafford
Existing Coverage
w/ only Strafford North



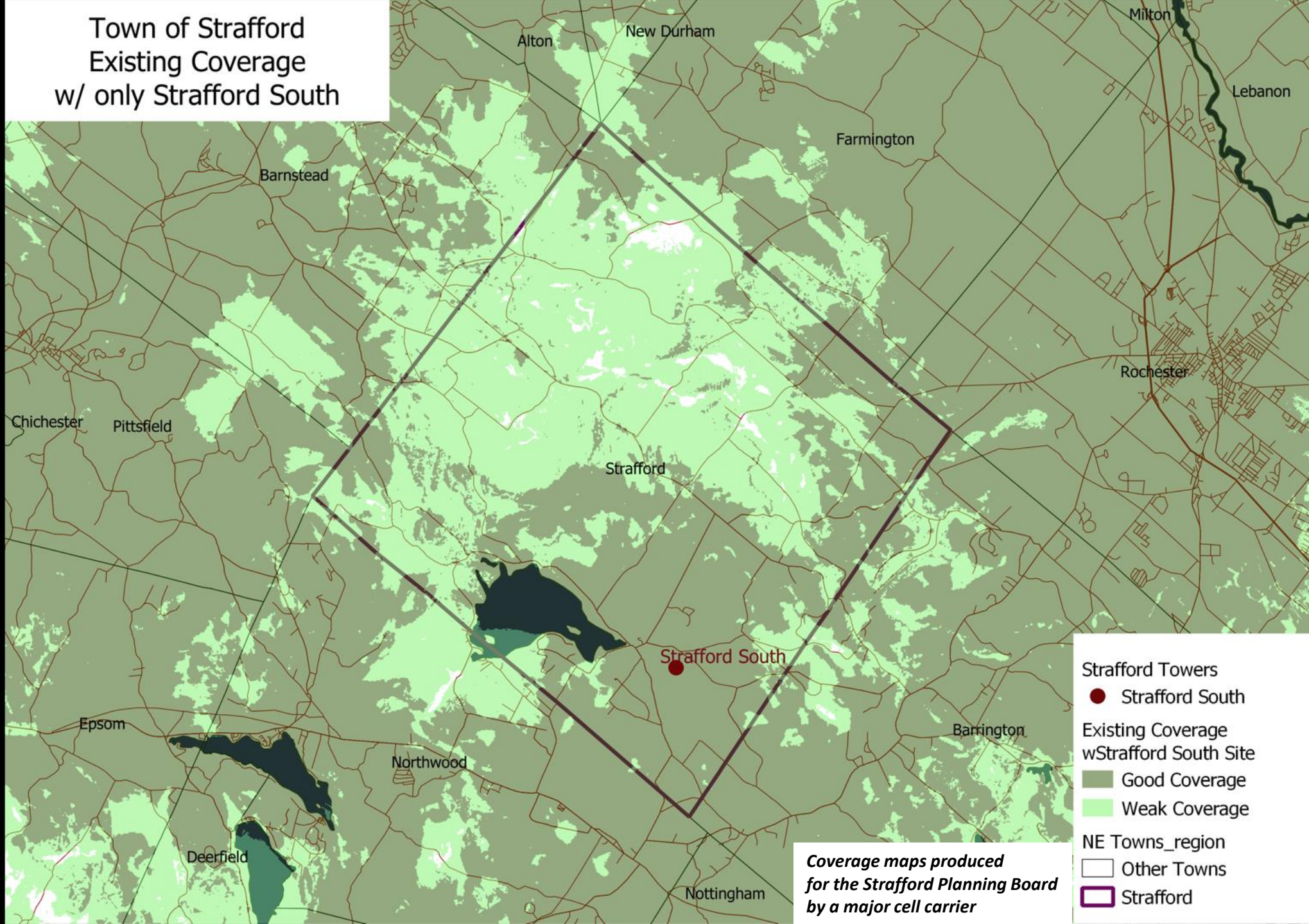
- Strafford North
- Existing Coverage w/ Strafford North Site
 - Good Coverage
 - Weak Coverage
- NE Towns_region
 - Other Towns
 - Strafford

Coverage maps produced for the Strafford Planning Board by a major cell carrier

Next



Town of Strafford
Existing Coverage
w/ only Strafford South



Strafford Towers

● Strafford South

**Existing Coverage
wStrafford South Site**

■ Good Coverage

■ Weak Coverage

NE Towns_region

□ Other Towns

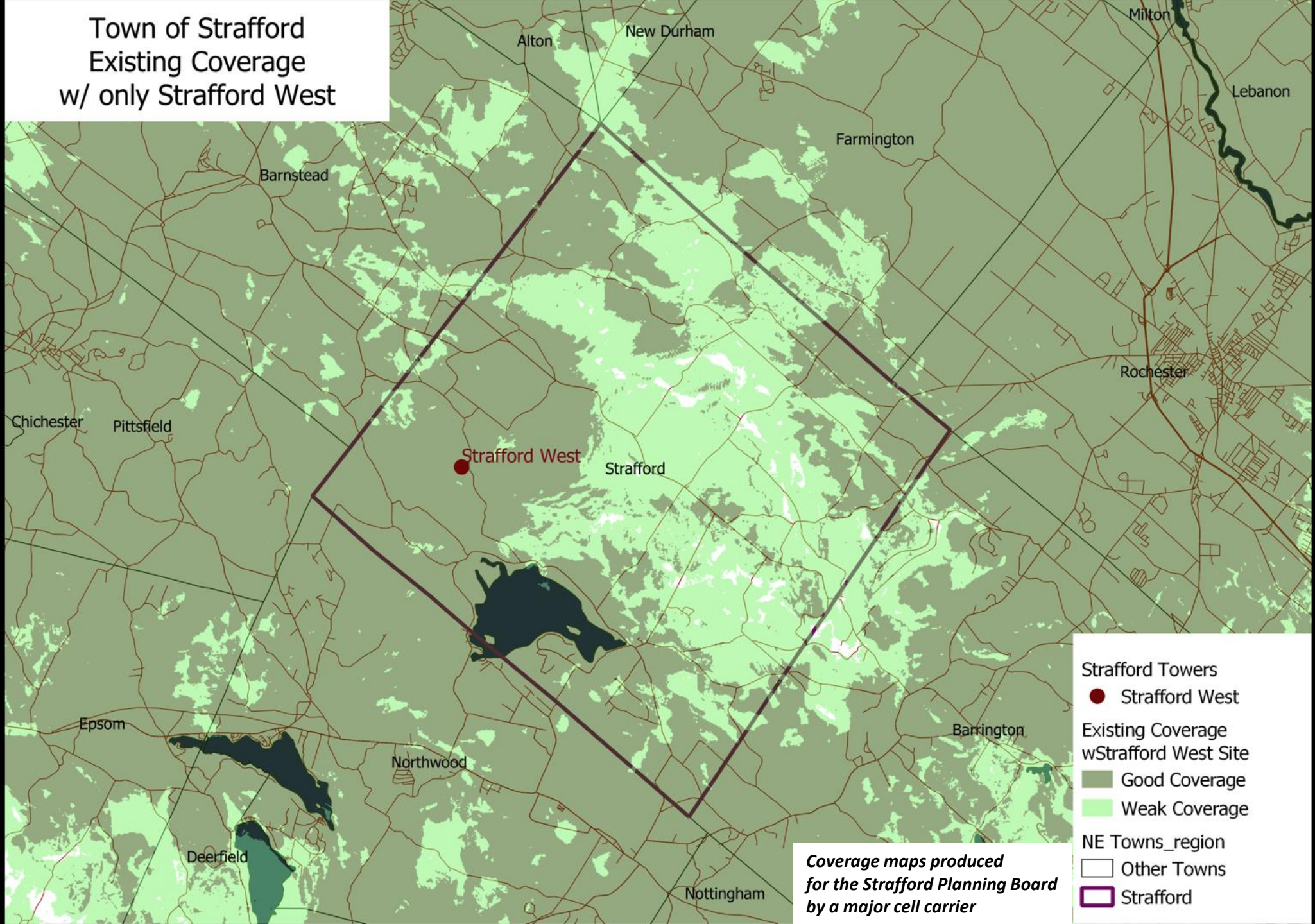
▭ Strafford

*Coverage maps produced
for the Strafford Planning Board
by a major cell carrier*

Next



Town of Strafford
Existing Coverage
w/ only Strafford West



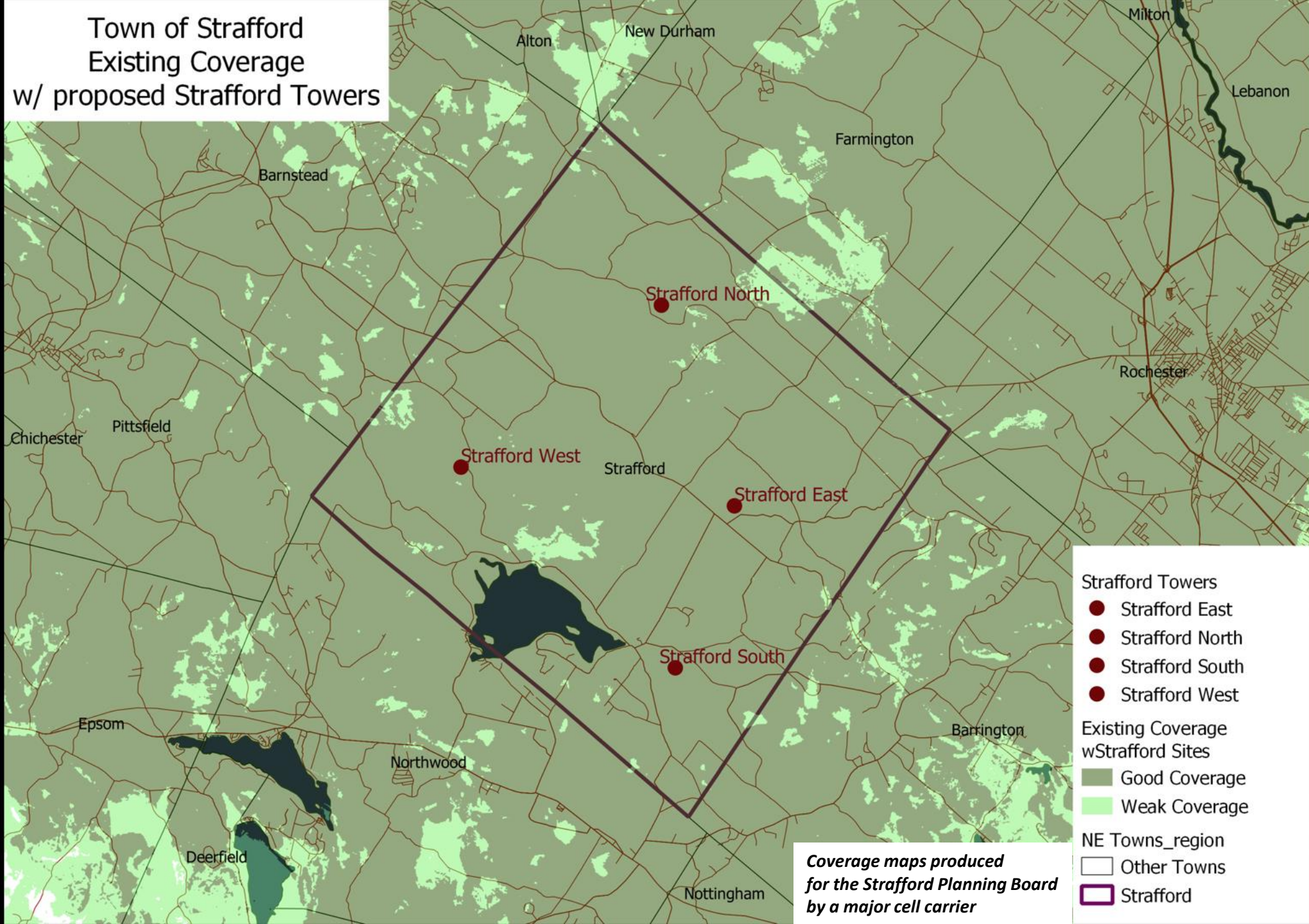
- Strafford Towers**
 - Strafford West
- Existing Coverage w/ Strafford West Site**
 - Good Coverage
 - Weak Coverage
- NE Towns_region**
 - Other Towns
 - Strafford

Coverage maps produced for the Strafford Planning Board by a major cell carrier



Next

Town of Strafford Existing Coverage w/ proposed Strafford Towers



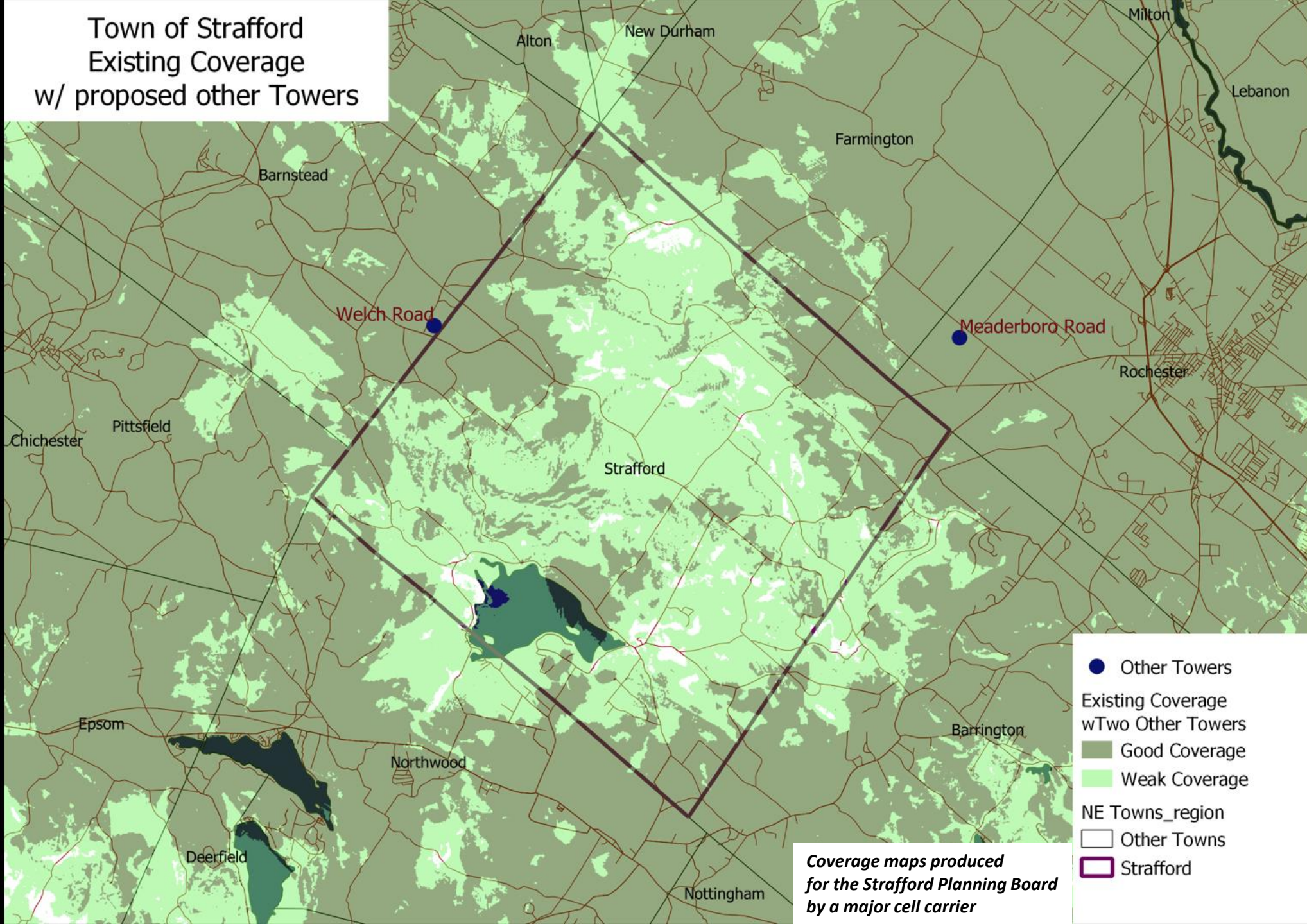
- Strafford Towers**
- Strafford East
 - Strafford North
 - Strafford South
 - Strafford West

- Existing Coverage w/ Strafford Sites**
- Good Coverage
 - Weak Coverage

- NE Towns_region**
- Other Towns
 - ▭ Strafford

Coverage maps produced for the Strafford Planning Board by a major cell carrier

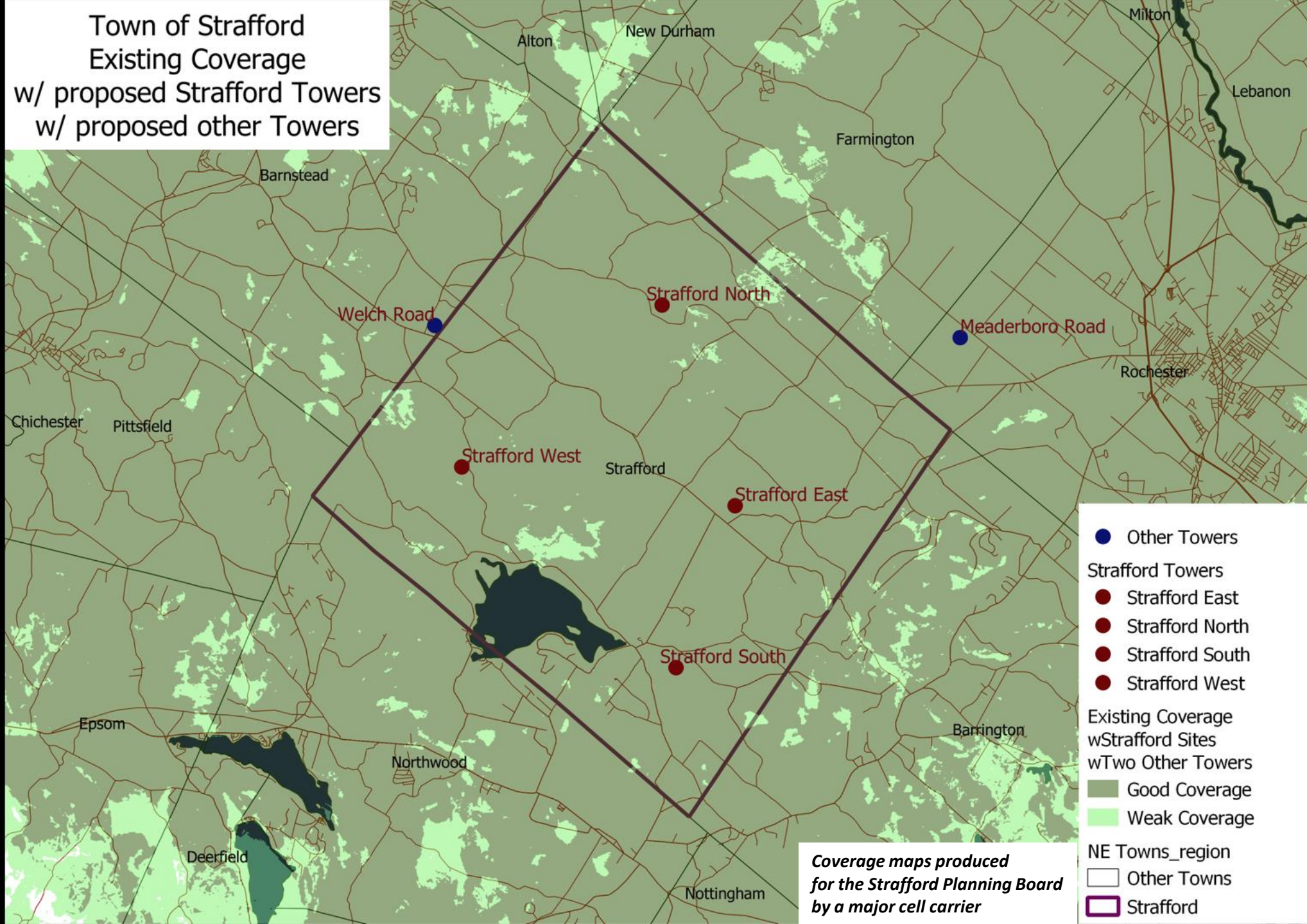
Town of Strafford
Existing Coverage
w/ proposed other Towers



- Other Towers
- Existing Coverage wTwo Other Towers
 - Good Coverage
 - Weak Coverage
- NE Towns_region
 - Other Towns
 - Strafford

Coverage maps produced
for the Strafford Planning Board
by a major cell carrier

Town of Strafford
 Existing Coverage
 w/ proposed Strafford Towers
 w/ proposed other Towers



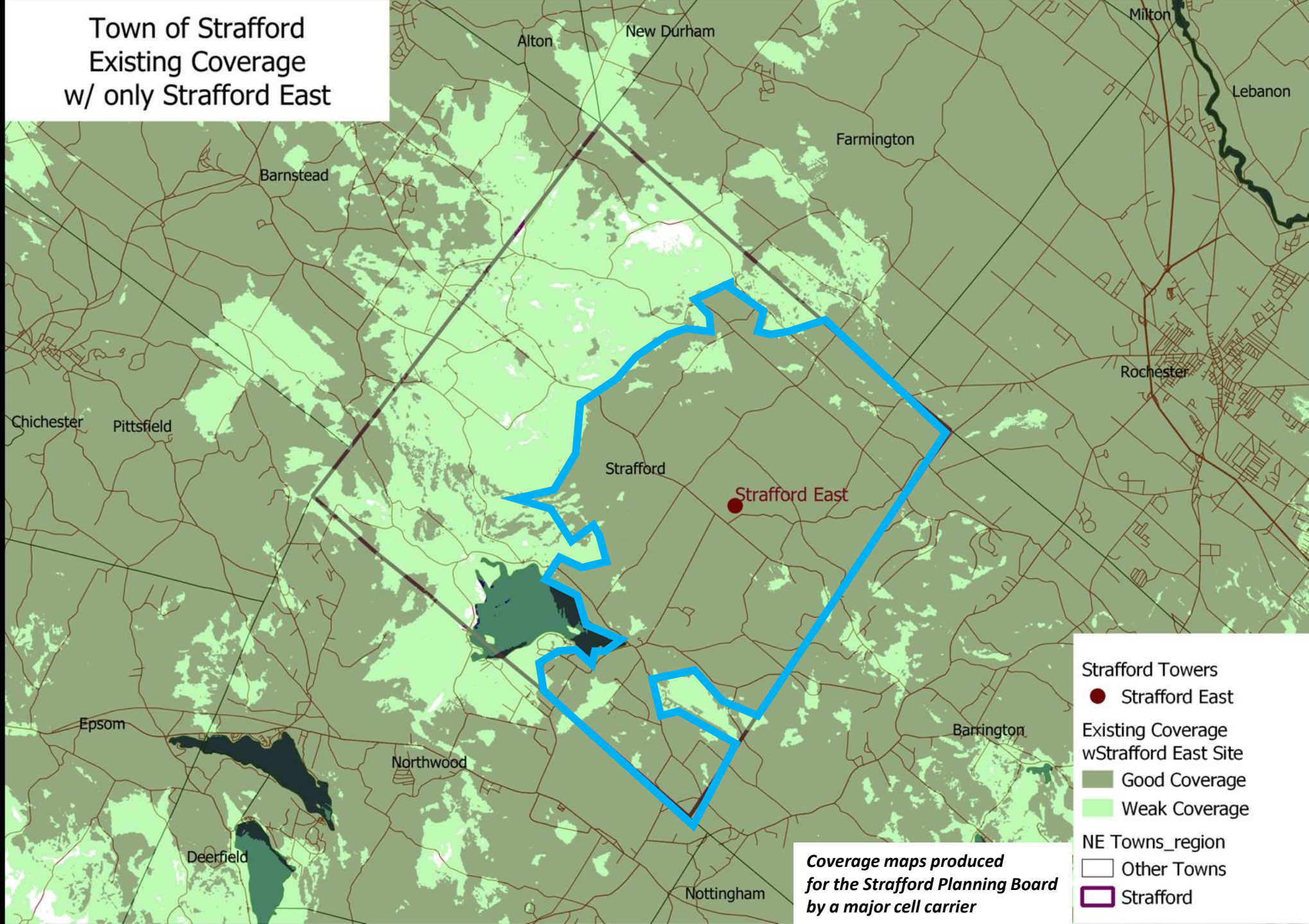
- Other Towers
- Strafford Towers**
- Strafford East
- Strafford North
- Strafford South
- Strafford West
- Existing Coverage**
- wStrafford Sites
- wTwo Other Towers
- Good Coverage
- Weak Coverage
- NE Towns_region
- Other Towns
- Strafford

Coverage maps produced for the Strafford Planning Board by a major cell carrier

Next



Town of Strafford
Existing Coverage
w/ only Strafford East



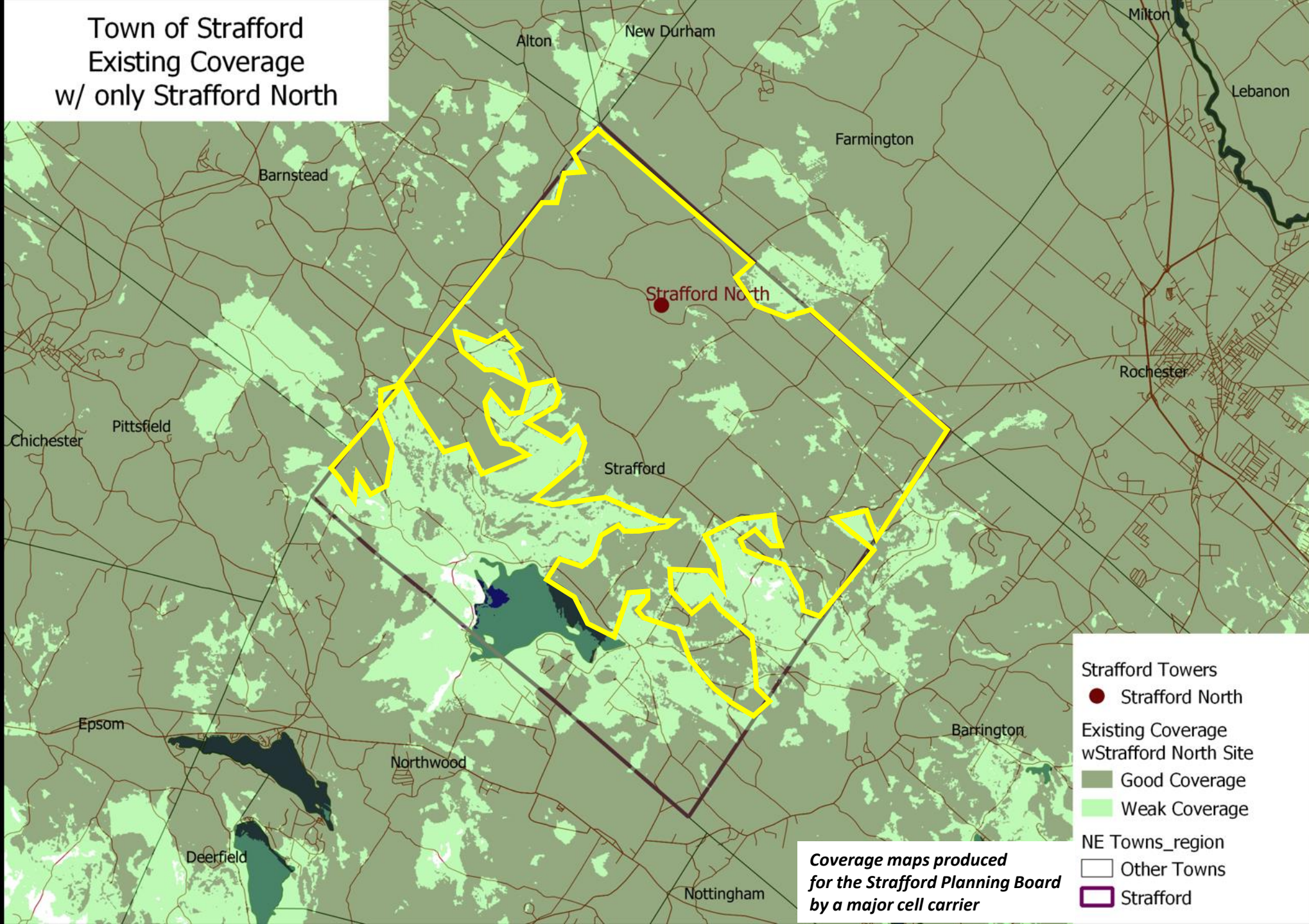
- Strafford Towers**
 - Strafford East
- Existing Coverage w/ Strafford East Site**
 - Good Coverage
 - Weak Coverage
- NE Towns_region**
 - Other Towns
 - Strafford

Coverage maps produced for the Strafford Planning Board by a major cell carrier

Next



Town of Strafford
Existing Coverage
w/ only Strafford North



- Strafford North
- Existing Coverage w/ Strafford North Site
 - Good Coverage
 - Weak Coverage
- NE Towns_region
 - Other Towns
 - Strafford

Coverage maps produced
for the Strafford Planning Board
by a major cell carrier

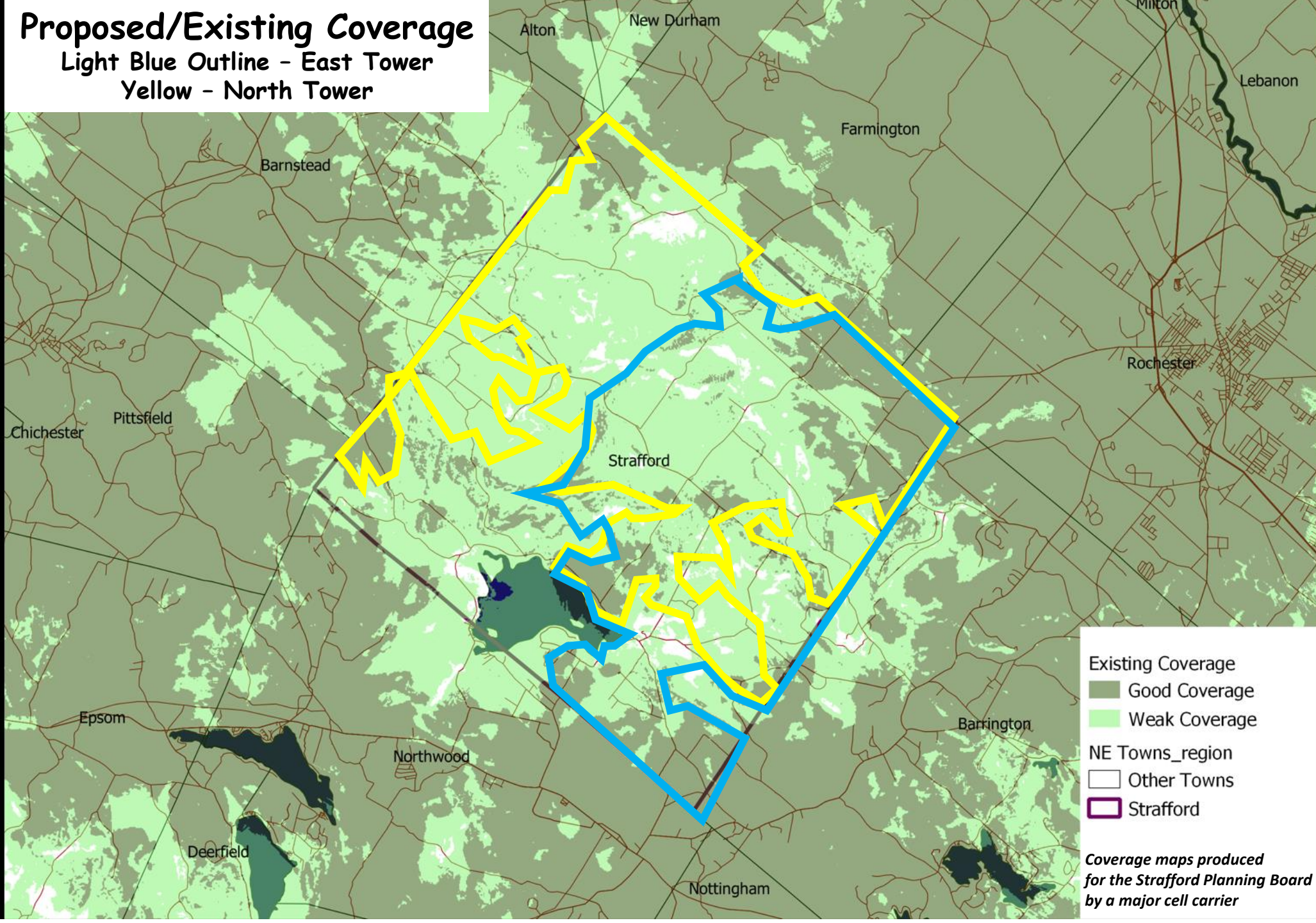
Next



Proposed/Existing Coverage

Light Blue Outline - East Tower

Yellow - North Tower



Existing Coverage

Good Coverage

Weak Coverage

NE Towns_region

Other Towns

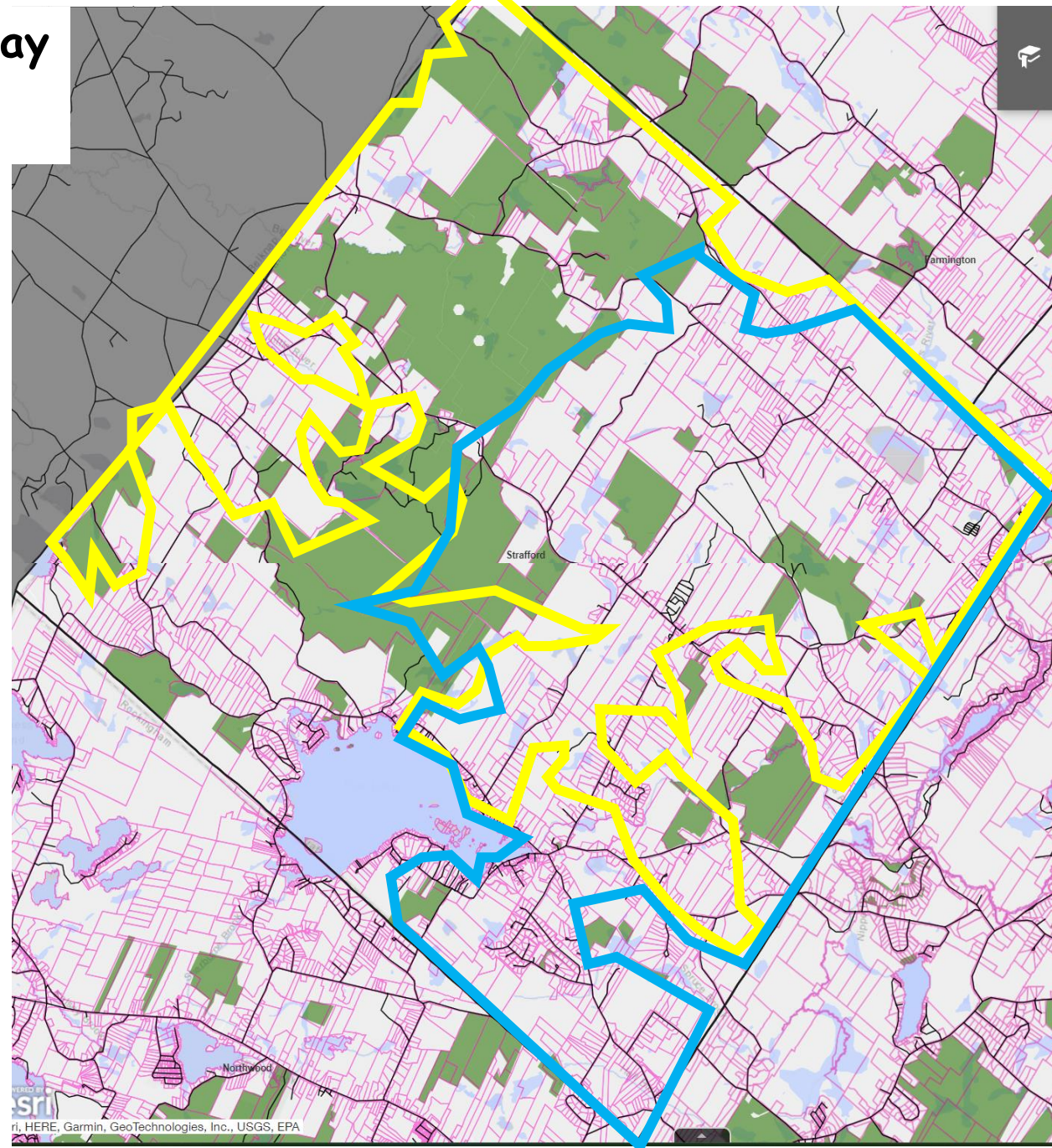
Stafford

Coverage maps produced for the Stafford Planning Board by a major cell carrier

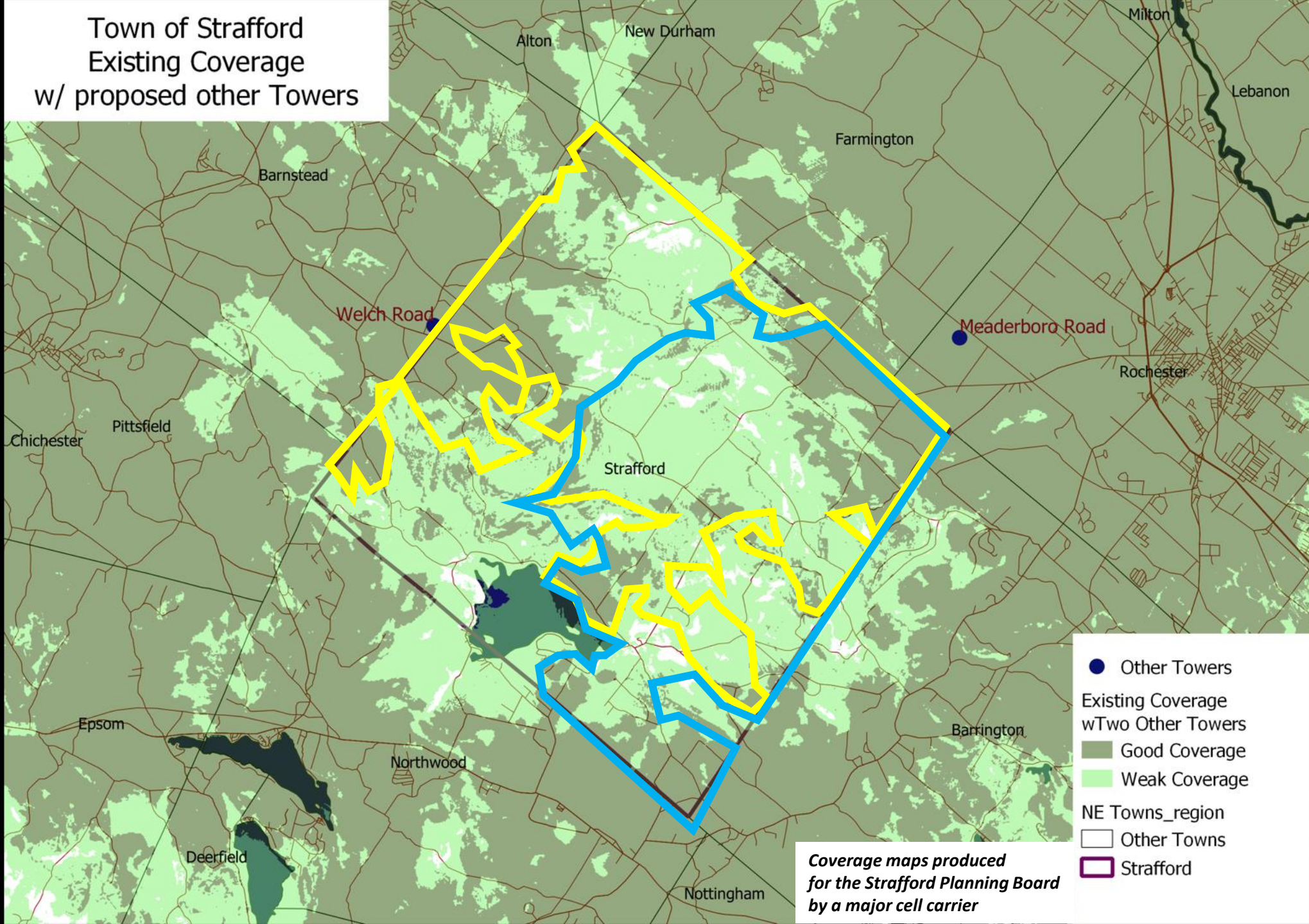
Coverage/Tax Map Overlay

Yellow - Cell Tower North

Blue - Cell Tower East



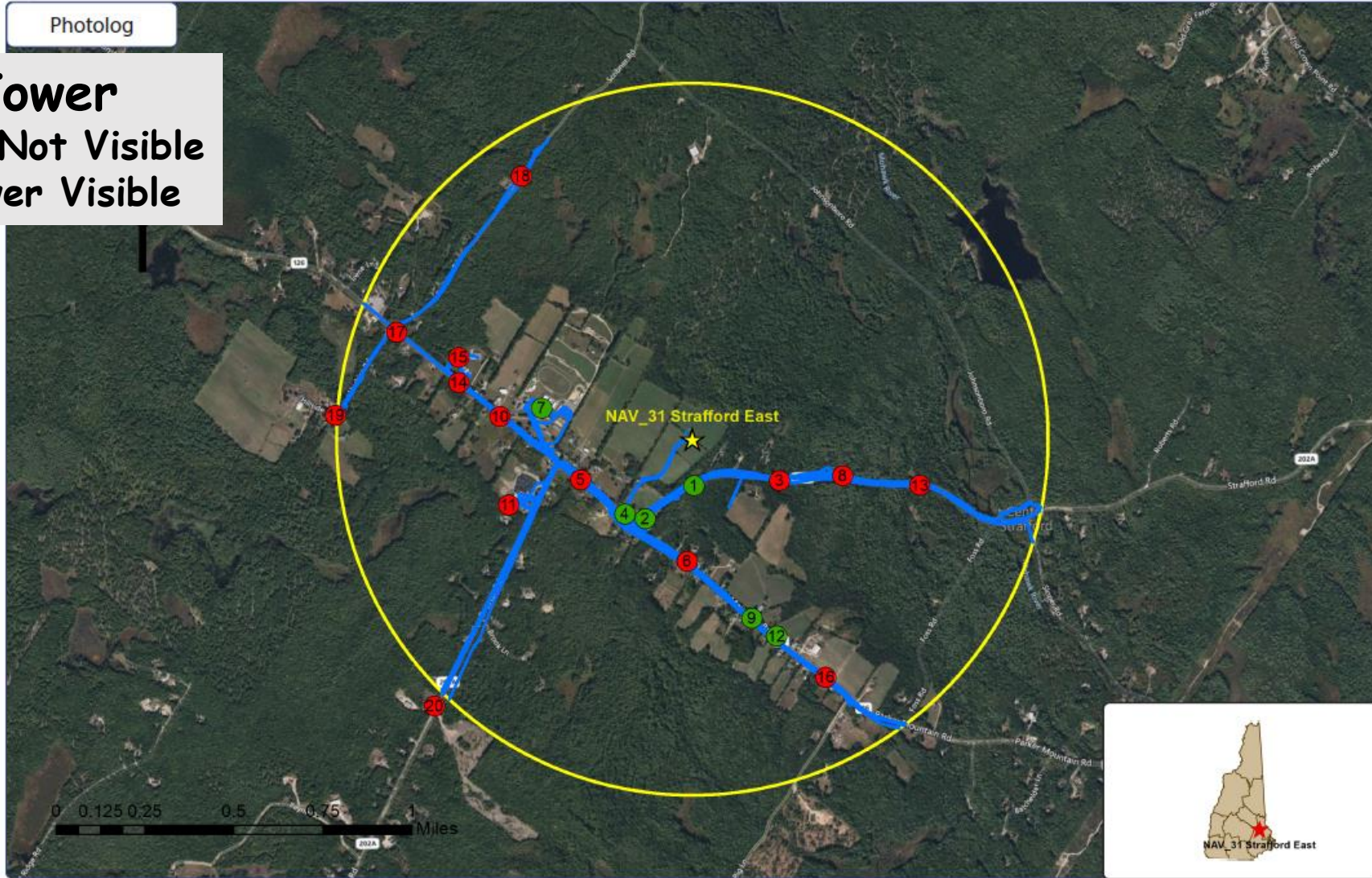
Town of Strafford
Existing Coverage
w/ proposed other Towers



- Other Towers
- Existing Coverage w/Two Other Towers
- Good Coverage
- Weak Coverage
- NE Towns_region
- Other Towns
- Strafford

Coverage maps produced
for the Strafford Planning Board
by a major cell carrier

East Tower
Red - Tower Not Visible
Green - Tower Visible



Wireless Telecommunications Facility:

NAV-31 Strafford East
15 Strafford Road
Strafford, NH 03884

Legend:

- ★ Facility Location
- 1 Mile Radius
- Reconnaissance Track Log
- ⊗ Photo location - Balloon visible - Year Round Visibility
- ⊗ Photo location - Balloon visible - Obscured Visibility
- ⊗ Photo location - Balloon NOT visible

Photo Simulations are for demonstration purposes only. It should not be used in any other fashion or with any other intent. The accuracy of the resulting data is not guaranteed and is not for redistribution



**Rte 202-A
Near Proposed Entrance**



Photo #	Approximate Location	Gps Coordinates	Distance to site	Orientation	Bearing to site	Visibility
1	Mile Hill Rd	43.26949 -71.11841	0.13 Miles	South	359	Year Round

Site: NAV-31 Strafford East

Photo Simulations are for demonstration purposes only. It should not be used in any other fashion or with any other intent. The accuracy of the resulting data is not guaranteed and is not for redistribution



**Rte 202-A
Near Proposed Entrance**



Photo #	Approximate Location	Gps Coordinates	Distance to site	Orientation	Bearing to site	Visibility
1	Mile Hill Rd	43.26949 -71.11841	0.13 Miles	South	359	Year Round

Site: NAV-31 Strafford East

Photo Simulations are for demonstration purposes only. It should not be used in any other fashion or with any other intent. The accuracy of the resulting data is not guaranteed and is not for redistribution



Simulation



Photo #	Approximate Location	Gps Coordinates	Distance to site	Orientation	Bearing to site	Visibility
2	Strafford Rd	43.26819 -71.12115	0.26 Miles	South-West	32	Year Round

Site: NAV-31 Strafford East

Photo Simulations are for demonstration purposes only. It should not be used in any other fashion or with any other intent. The accuracy of the resulting data is not guaranteed and is not for redistribution



Simulation

Rte 202-A Near Austin Hall



Photo #	Approximate Location	Gps Coordinates	Distance to site	Orientation	Bearing to site	Visibility
4	Strafford Rd	43.26839 -71.12228	0.28 Miles	South-West	43	Year Round

Site: NAV-31 Strafford East

Photo Simulations are for demonstration purposes only. It should not be used in any other fashion or with any other intent. The accuracy of the resulting data is not guaranteed and is not for redistribution



Simulation

Austin Cate Academy



Photo #	Approximate Location	Gps Coordinates	Distance to site	Orientation	Bearing to site	Visibility
7	Strafford Rd	43.27276 -71.12682	0.43 Miles	West	103	Year Round

Site: NAV-31 Strafford East

Photo Simulations are for demonstration purposes only. It should not be used in any other fashion or with any other intent. The accuracy of the resulting data is not guaranteed and is not for redistribution



Simulation

**Rte 126
Near Jim Stiles Field**



Photo #	Approximate Location	Gps Coordinates	Distance to site	Orientation	Bearing to site	Visibility
9	Parker Mountain Rd	43.26406 -71.11533	0.53 Miles	South	343	Year Round

Site: NAV-31 Strafford East

Photo Simulations are for demonstration purposes only. It should not be used in any other fashion or with any other intent. The accuracy of the resulting data is not guaranteed and is not for redistribution



Simulation

Rte 126
Jim Stiles Barn



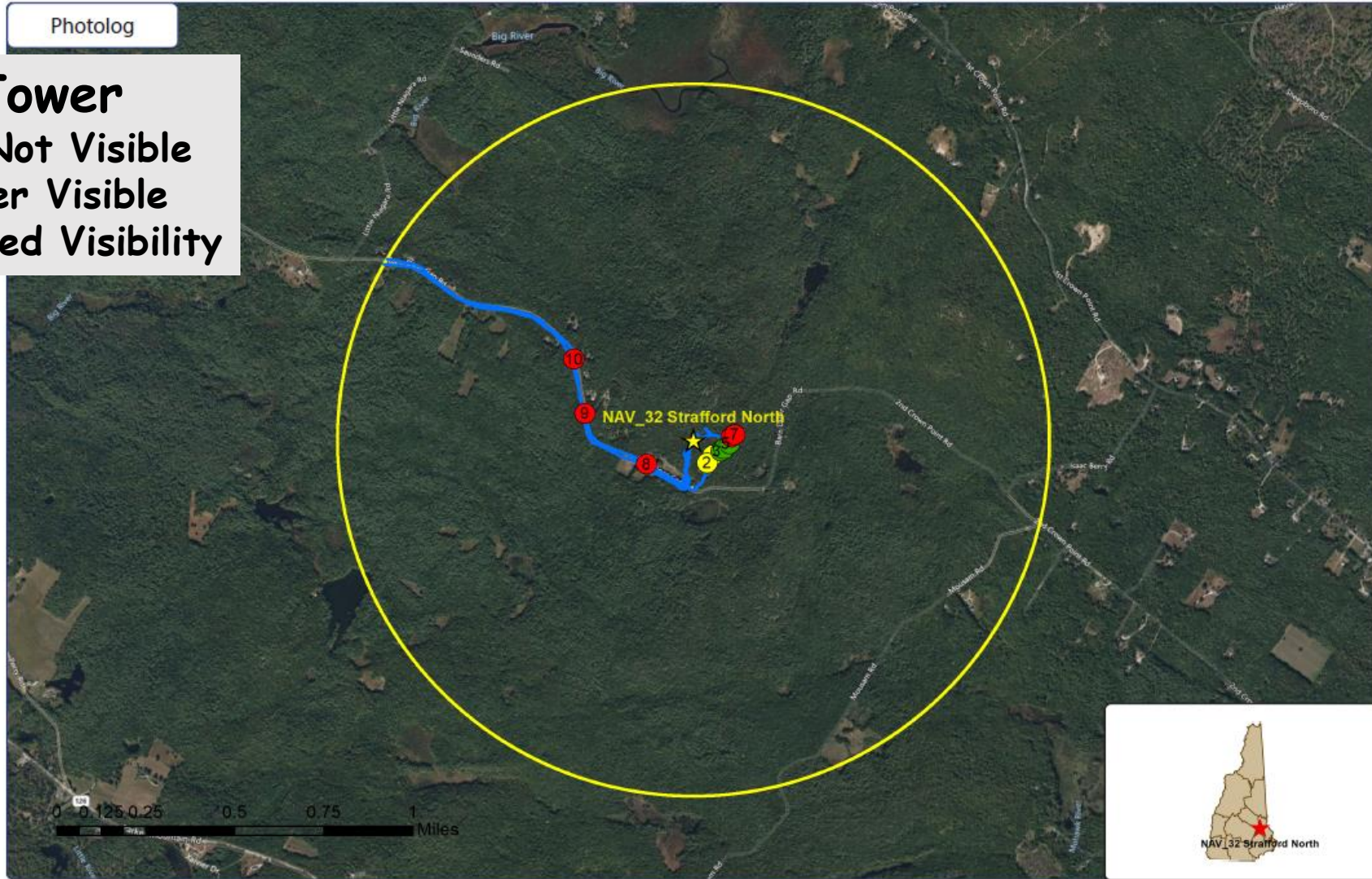
Photo #	Approximate Location	Gps Coordinates		Distance to site	Orientation	Bearing to site	Visibility
12	Parker Mountain Rd	43.26331	-71.11398	0.6 Miles	South	338	Year Round

Site: NAV-31 Strafford East

Photo Simulations are for demonstration purposes only. It should not be used in any other fashion or with any other intent. The accuracy of the resulting data is not guaranteed and is not for redistribution



North Tower
Red - Tower Not Visible
Green - Tower Visible
Yellow - Obscured Visibility



Wireless Telecommunications Facility:

NAV-32 Strafford North
 581 Barn Door Gap Road
 Strafford, NH 03884

Legend:

- ★ Facility Location
- 1 Mile Radius
- Reconnaissance Track Log
- ⓧ Photo location - Balloon visible - Year Round Visibility
- ⓧ Photo location - Balloon visible - Obscured Visibility
- ⓧ Photo location - Balloon NOT visible

Photo Simulations are for demonstration purposes only. It should not be used in any other fashion or with any other intent. The accuracy of the resulting data is not guaranteed and is not for redistribution

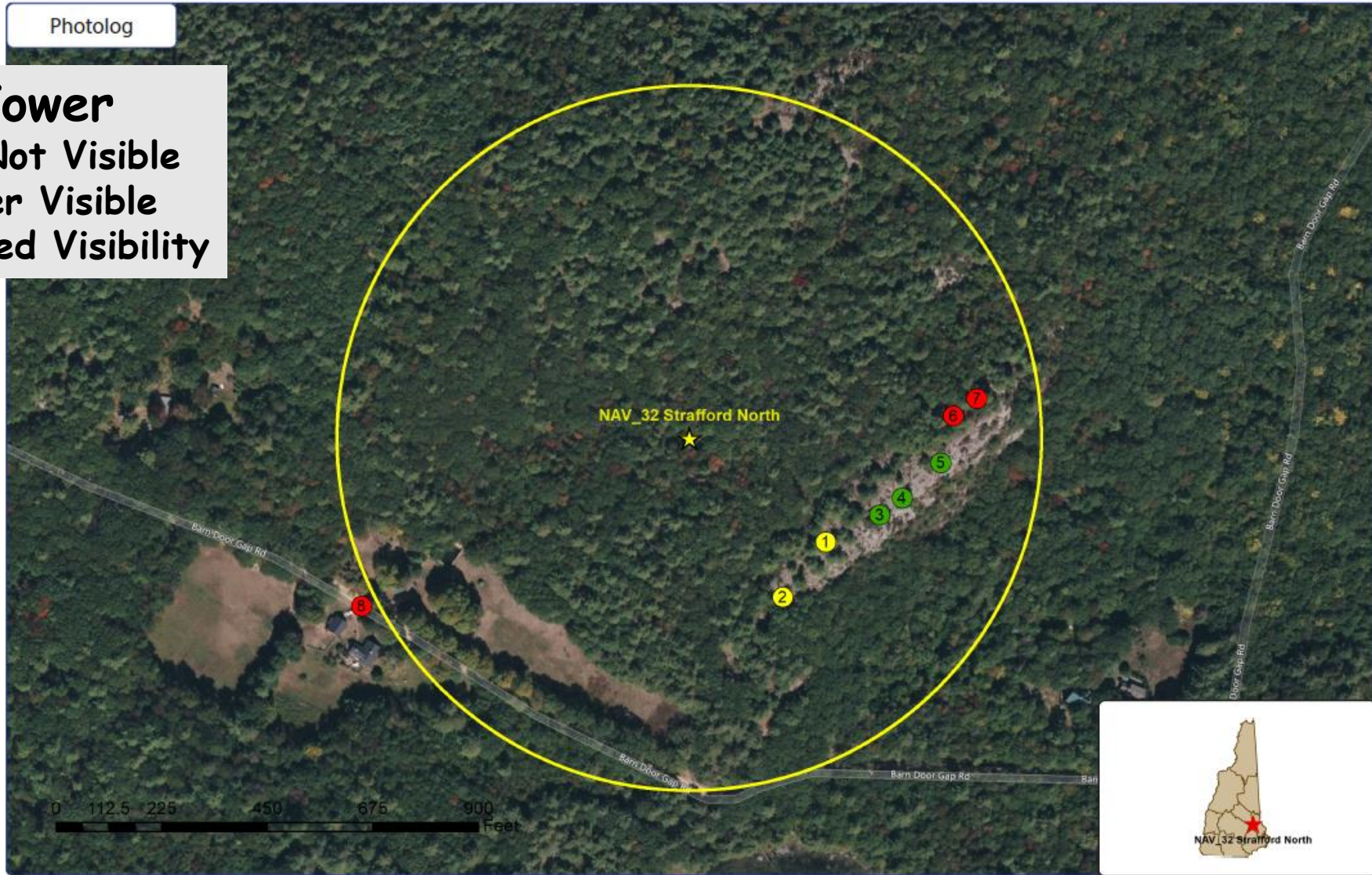


North Tower

Red - Tower Not Visible

Green - Tower Visible

Yellow - Obscured Visibility



Wireless Telecommunications Facility:

NAV-32 Strafford North
581 Barn Door Gap Road
Strafford, NH 03884

Legend:

- ★ Facility Location
- 750 Ft Radius
- ⓧ Photo location - Year Round Visibility
- ⓧ Photo location - Obscured Visibility
- ⓧ Photo location - NOT visible

Photo Simulations are for demonstration purposes only. It should not be used in any other fashion or with any other intent. The accuracy of the resulting data is not guaranteed and is not for redistribution



Trail to Sander's Ledge Near Overlook



Photo #	Approximate Location	Gps Coordinates	Distance to site	Orientation	Bearing to site	Visibility
1	Barn Door Gap Rd	43.31349 -71.13845	361.57 Feet	South-East	308	Obscured

Site: NAV-32 Strafford North

Photo Simulations are for demonstration purposes only. It should not be used in any other fashion or with any other intent. The accuracy of the resulting data is not guaranteed and is not for redistribution



Trail to Sander's Ledge Near Overlook



Photo #	Approximate Location	Gps Coordinates	Distance to site	Orientation	Bearing to site	Visibility
2	Barn Door Gap Rd	43.31318 -71.13879	388.72 Feet	South-East	330	Obscured

Site: NAV-32 Strafford North

Photo Simulations are for demonstration purposes only. It should not be used in any other fashion or with any other intent. The accuracy of the resulting data is not guaranteed and is not for redistribution



Simulation

Sander's Ledge SW



Photo #	Approximate Location	Gps Coordinates	Distance to site	Orientation	Bearing to site	Visibility
3	Strafford	43.31364 -71.13801	433.75 Feet	South-East	293	Year Round

Site: NAV-32 Strafford North

Photo Simulations are for demonstration purposes only. It should not be used in any other fashion or with any other intent. The accuracy of the resulting data is not guaranteed and is not for redistribution



Simulation

Sander's Ledge Midpoint



Photo #	Approximate Location	Gps Coordinates		Distance to site	Orientation	Bearing to site	Visibility
4	Barn Door Gap Rd	43.31374	-71.13782	468.5 Feet	East	286	Year Round

Site: NAV-32 Strafford North

Photo Simulations are for demonstration purposes only. It should not be used in any other fashion or with any other intent. The accuracy of the resulting data is not guaranteed and is not for redistribution



Simulation

Sander's Ledge NE



Photo #	Approximate Location	Gps Coordinates		Distance to site	Orientation	Bearing to site	Visibility
5	Barn Door Gap Rd	43.31394	-71.13751	0.1 Miles	East	276	Year Round

Site: NAV-32 Strafford North

Photo Simulations are for demonstration purposes only. It should not be used in any other fashion or with any other intent. The accuracy of the resulting data is not guaranteed and is not for redistribution

