

SITE DATA

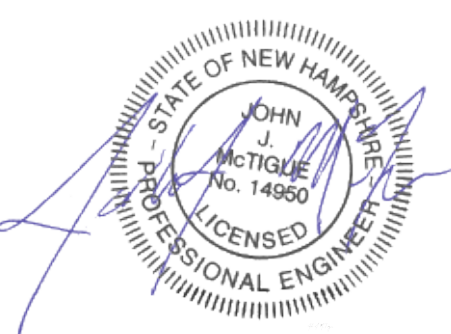
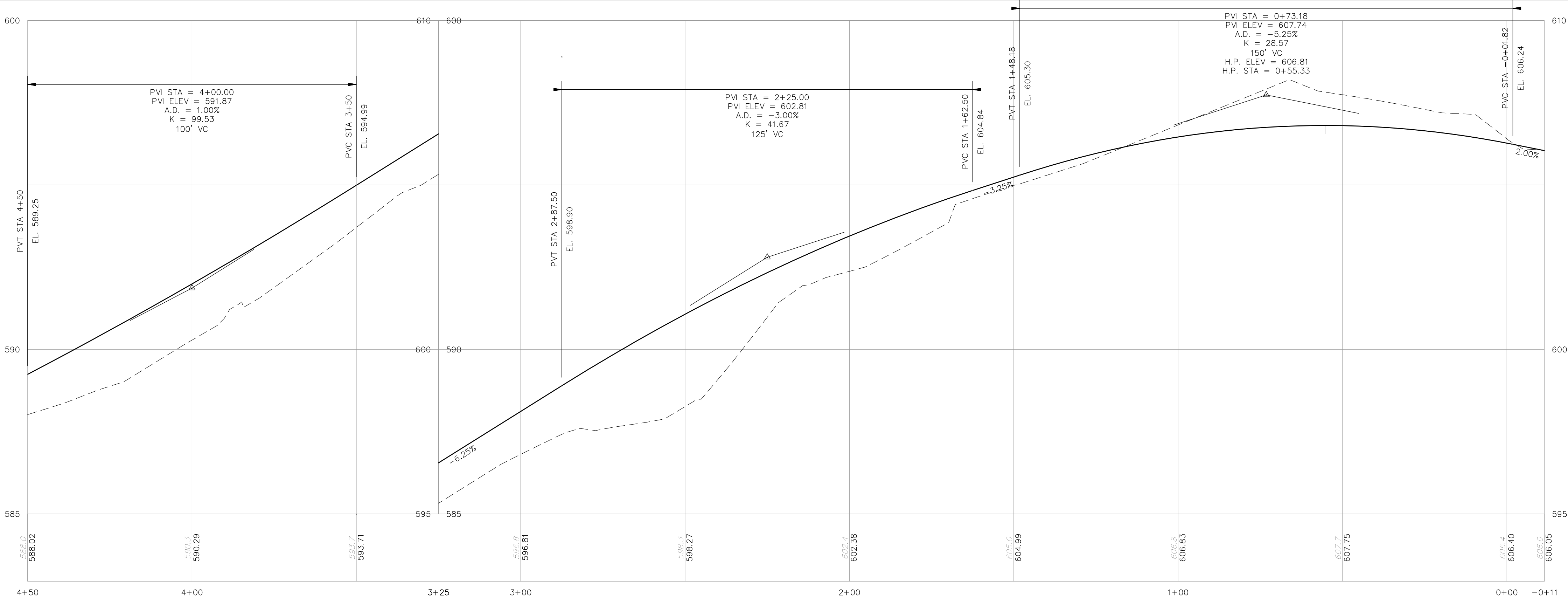
OWNER OF RECORD OF MAP 11 LOT 4: BERTHA L. HUCKINS REVOCABLE TRUST, 22 HILLSIDE DRIVE, STRAFFORD, NH 03884
DEED REFERENCE TO PARCEL IS BK. #2216 PG.#23
AREA OF PARCEL = 300X± ACRES

ZONED: AGRICULTURAL-RESIDENTIAL DISTRICT.
EXISTING USE: FARMING
PROPOSED USE: RESIDENTIAL LOT

THE PURPOSE OF THIS PLAN IS TO CONSTRUCT A ROAD FOR TWO EXISTING LOTS AND PROPOSED LOT. ASSOCIATED IMPROVEMENTS INCLUDE AND ARE NOT LIMITED TO ACCESS, GRADING, STORMWATER MANAGEMENT SYSTEMS, AND UTILITIES.

NOTES

- SEE NOTES ON SHEET C-01.
- PROPOSED SPOT GRADES ARE PROVIDED TO THE NEAREST 0.05.
- LENGTH OF PIPE IS FOR CONVENIENCE ONLY. ACTUAL PIPE LENGTH SHALL BE DETERMINED IN THE FIELD.
- ALL PROPOSED DRAINAGE PIPES SHALL BE 12" AND HDPE, UNLESS OTHERWISE NOTED ON THE PLAN.
- DRAINAGE PIPES WITH LESS THAN 3' COVER SHALL BE INSULATED (SEE UTILITY TRENCH DETAIL) AND DRAINAGE CATCH BASINS WITH LESS THAN 3.5' OF COVER OVER INVERTS SHALL USE SLAB TOP CATCH BASIN (SEE DETAILS).
- SUBDRAINAGE MUST DAYLIGHT OR TIE INTO THE STORMWATER MANAGEMENT SYSTEM. COORDINATE SUBDRAINAGE SYSTEM DESIGN WITH THE ENGINEER OF RECORD.



SUBDIVISION PLANS

TAX MAP 11 LOT 4

PLAN AND PROFILE

HUCKINS REVOCABLE TRUST SUBDIVISION
22 HILLSIDE DRIVE - STRAFFORD, NEW HAMPSHIRE

OWNED BY
BERTHA L. HUCKINS REVOCABLE TRUST
PREPARED FOR
BERTHA L. HUCKINS REVOCABLE TRUST

SCALE:

MAY 9, 2023

Copyright 2023 ©TFMoran, Inc.
48 Constitution Drive, Bedford, N.H. 03110

All rights reserved. These plans and materials may not be copied, duplicated, replicated or otherwise reproduced in any form whatsoever without the prior written permission of TFMoran, Inc.

This plan is not effective unless signed by a duly authorized officer of TFMoran, Inc.



HORIZONTAL SCALE 1"=20'
20 10 0 20

REV	DATE	DESCRIPTION	DR	CK
1	8/28/2023	Update Wetlands	JJM	JCC

Seacoast Division

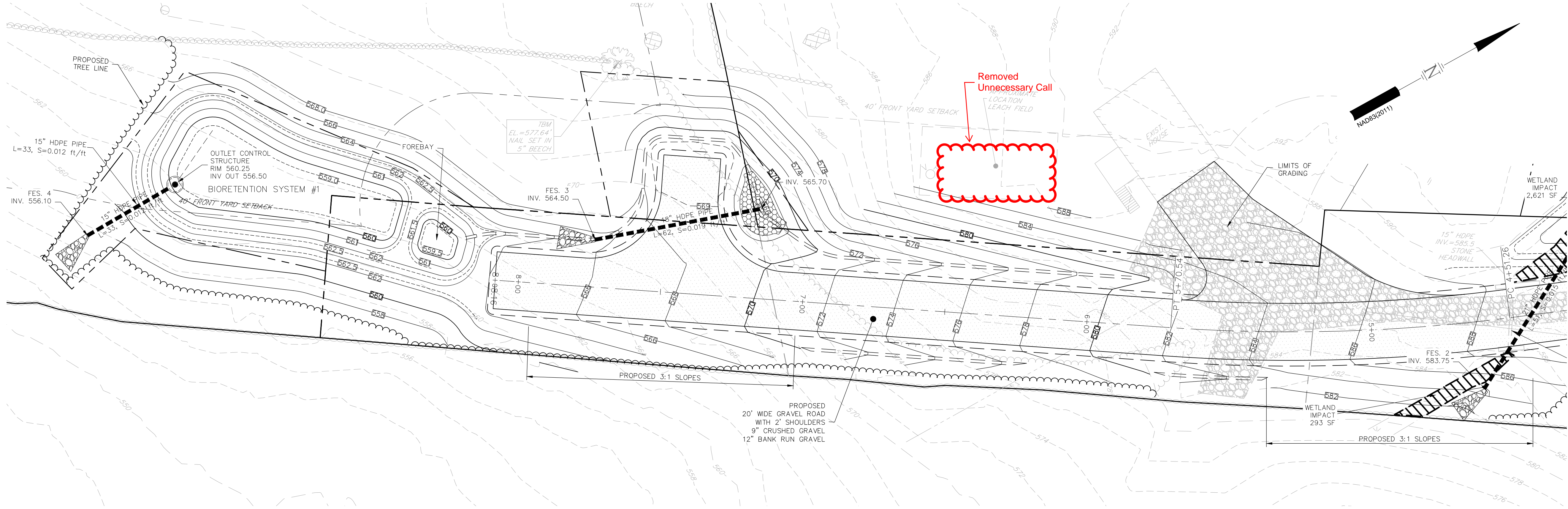


Civil Engineers
Structural Engineers
Traffic Engineers
Land Surveyors
Landscape Architects
Scientists

170 Commerce Way, Suite 102
Portsmouth, NH 03801
Phone (603) 431-2222
Fax (603) 431-0910
www.tfmoran.com

47516.00	DR	JJM	FB	-	47516-00_PLAN-PROFILE	C-02
REV	DATE	DESCRIPTION	DR	CK		

Aug 28, 2023 - 5:20pm
F:\MISC Projects\47516 - Hillside Dr. Stratford, NH 03884\Design\PRODUCTION DRAWINGS\47516-00_Plan-Profile.dwg

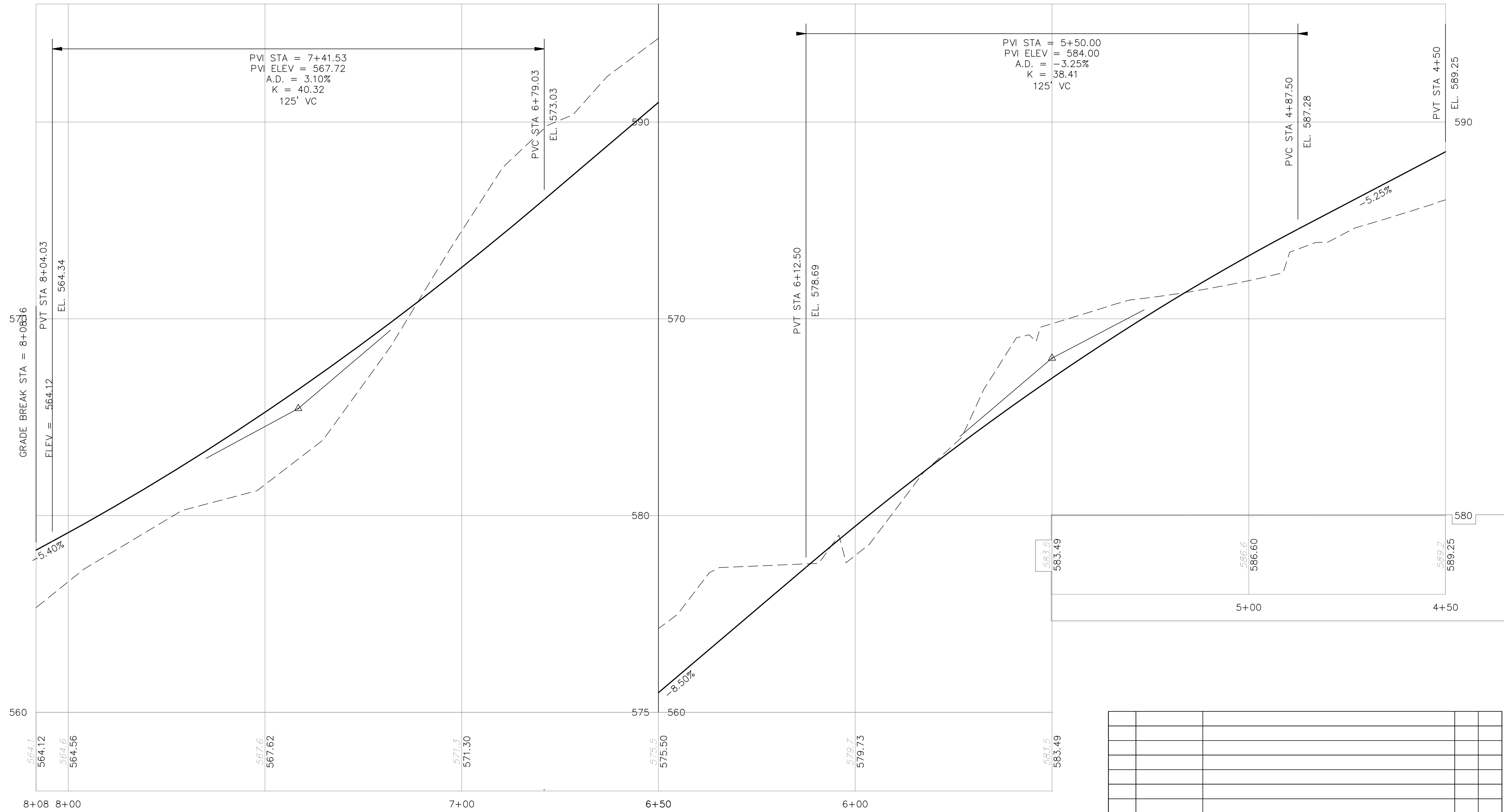


HORIZONTAL SCALE 1"=20'
20 10 0 20

Copyright 2023 ©TFMoran, Inc.
48 Constitution Drive, Bedford, N.H. 03110

All rights reserved. These plans and materials may not be copied, duplicated, replicated or otherwise reproduced in any form whatsoever without the prior written permission of TFMoran, Inc.

This plan is not effective unless signed by a duly authorized officer of TFMoran, Inc.



REV	DATE	DESCRIPTION	DR	CK
1	8/28/2023	Revise callout	JJM	JCC

SUBDIVISION PLANS

TAX MAP 11 LOT 4

PLAN AND PROFILE

HUCKINS REVOCABLE TRUST SUBDIVISION
22 HILLSIDE DRIVE - STRAFFORD, NEW HAMPSHIRE

OWNED BY

BERTHA L. HUCKINS REVOCABLE TRUST

PREPARED FOR

BERTHA L. HUCKINS REVOCABLE TRUST
1"=40' (11"X17")

SCALE: 1"=20' (22"X34")

MAY 9, 2023

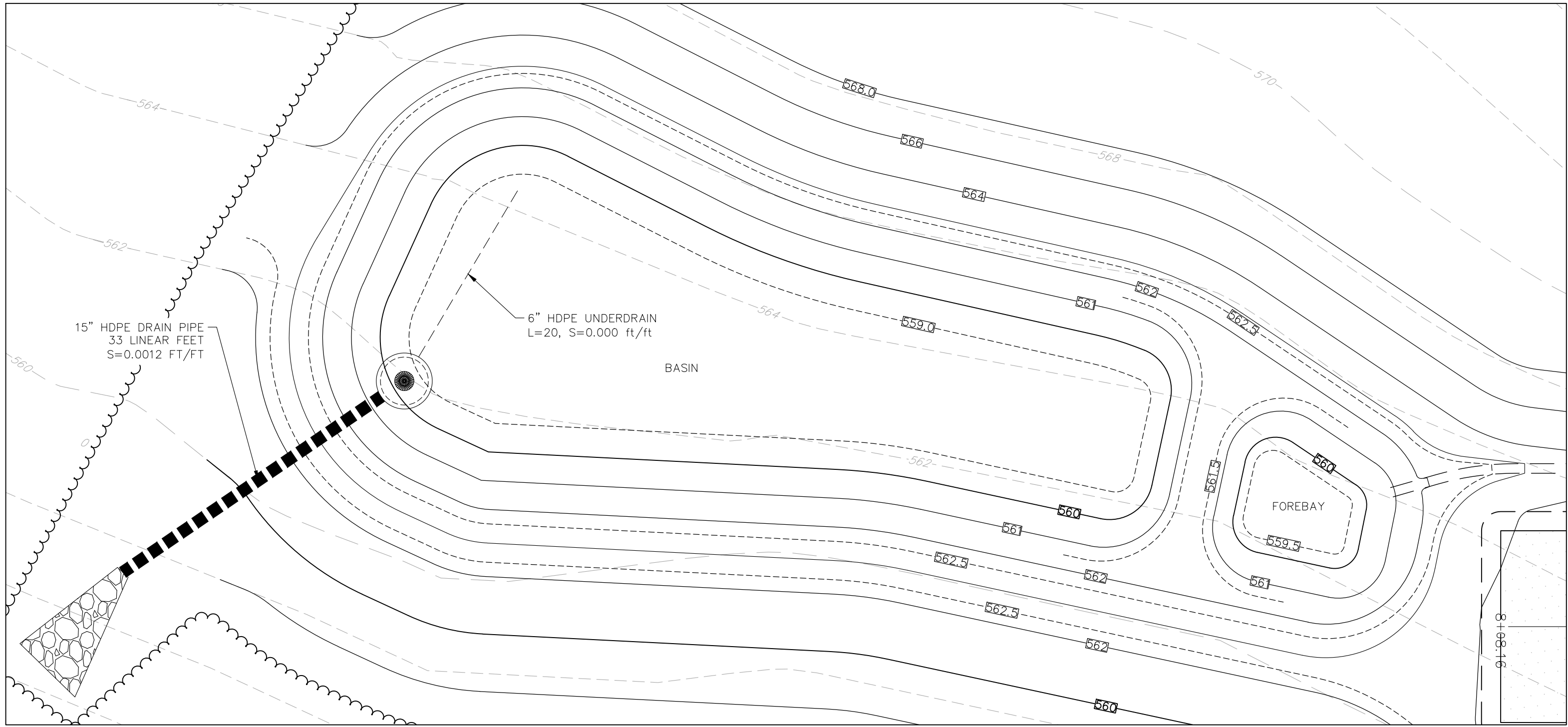
Seacoast Division



Civil Engineers
Structural Engineers
Traffic Engineers
Land Surveyors
Landscape Architects
Scientists

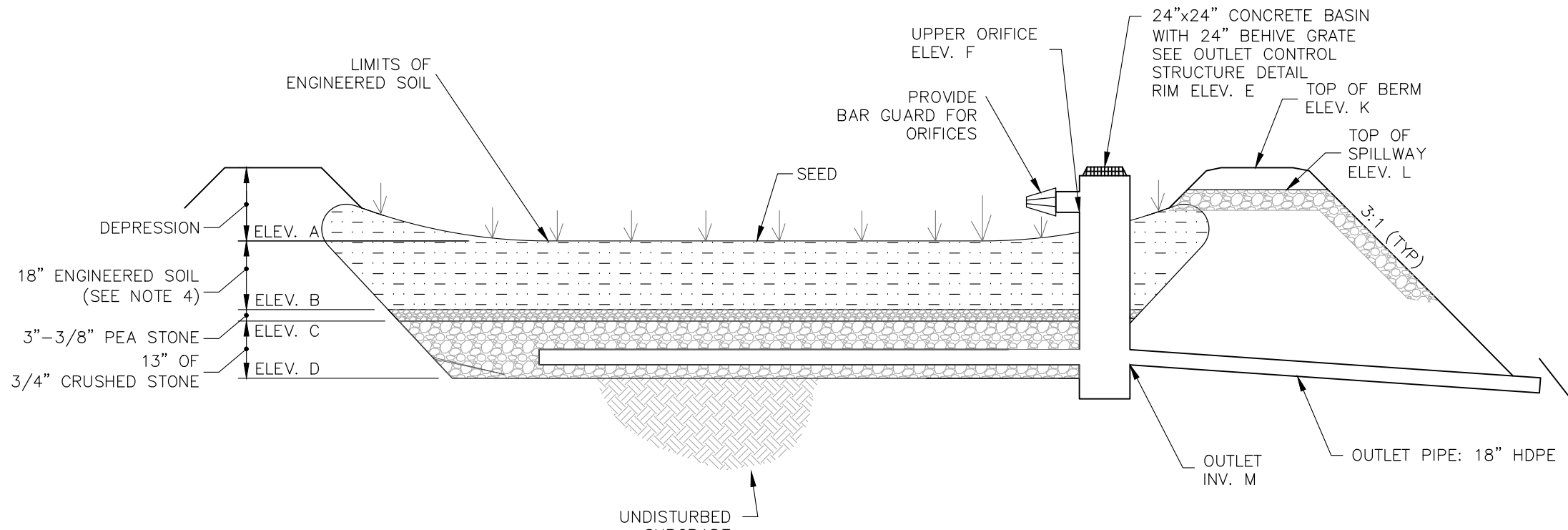
170 Commerce Way, Suite 102
Portsmouth, NH 03801
Phone (603) 431-2222
Fax (603) 431-0910
www.tfmoran.com

FILE	47516.00	DR	JJM	FB	-	C-03
REV		CK	JCC	CADFILE	47516-00_PLAN-PROFILE	

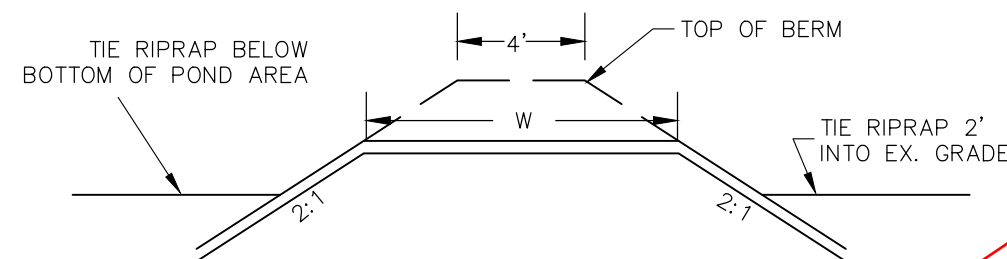
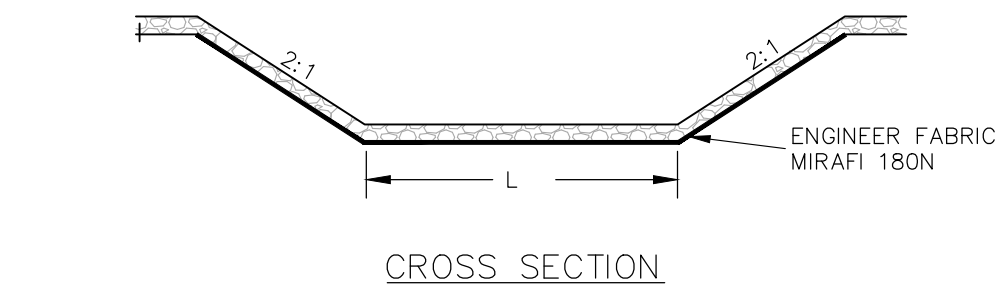


PLAN VIEW - BIORETENTION AREA #1
NOT TO SCALE

BIORETENTION AREA ELEVATION TABLE		
INV.	DESCRIPTION	BIORETENTION AREA WITH ISR ELEV.
A	BOT. BASIN	559.00
B	BOT. FILTER MEDIA	557.50
C	BOT. OF 3" PEA STONE	557.25
D	BOT. OF CRUSHED STONE	556.17
E	GRATE	560.25
F	NOT USED	NA
J	U.D. INVERT	556.50
K	TOP OF BERM	562.75
L	EMERGENCY SILLWAY	562.25
M	OUTLET PIPE INVERT	556.50
N	END OF PIPE INVERT	556.10

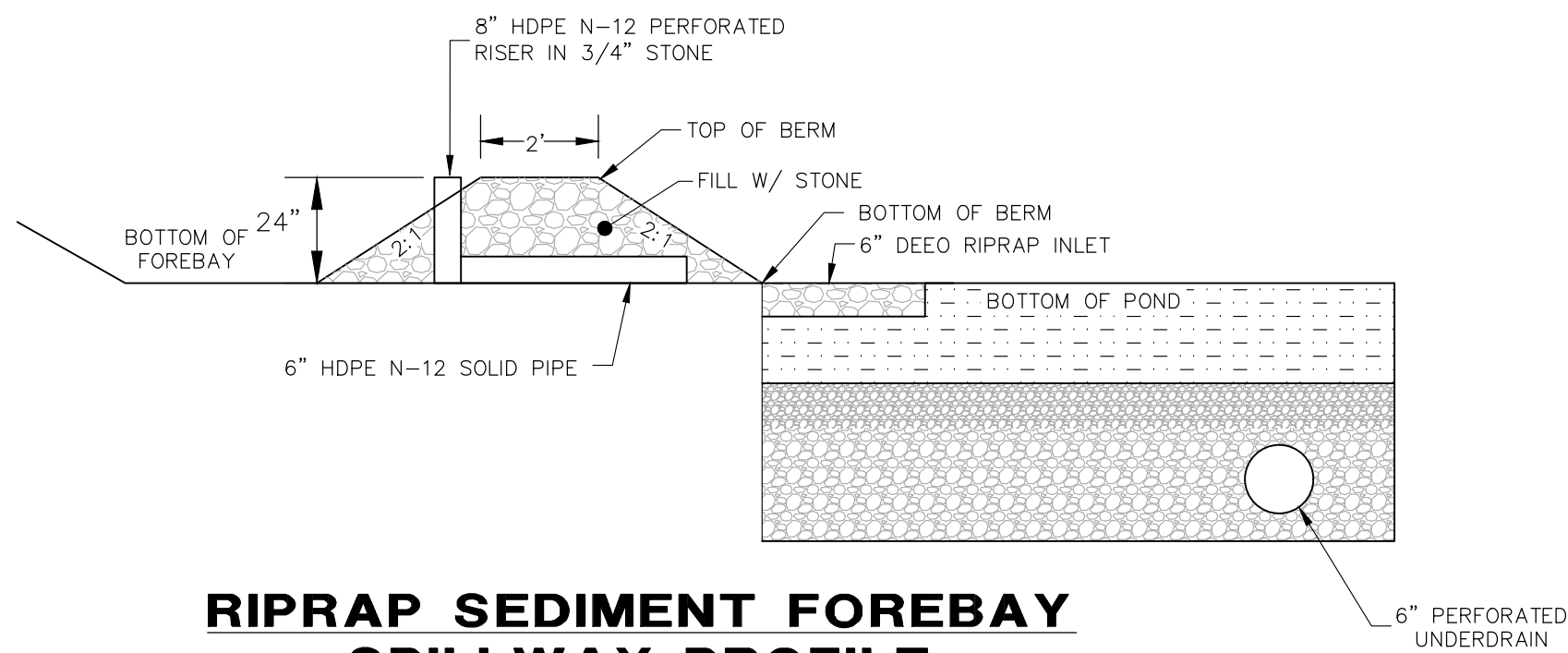


BIORETENTION AREA
NOT TO SCALE

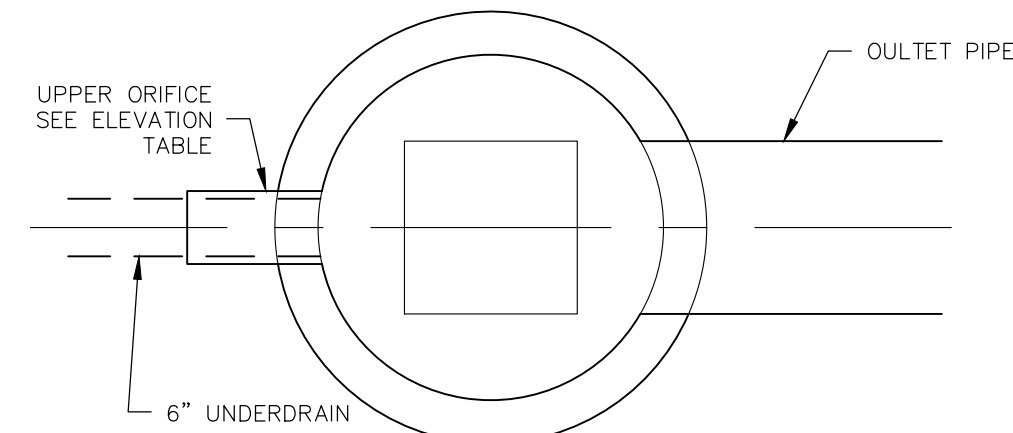


BMP'S		
BIORETENTION AREA #1	L	W
BIORETENTION AREA #1	10'	5'
BIORETENTION AREA #2	15'	20'

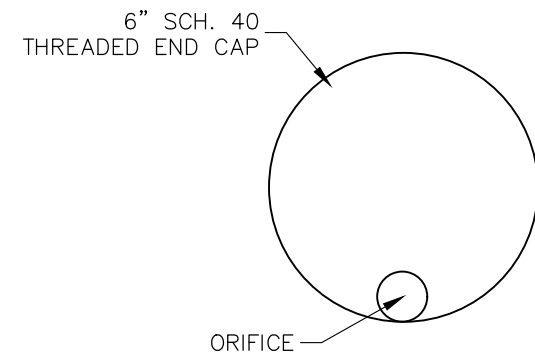
EMERGENCY SPILLWAY PROFILE
NOT TO SCALE



RIPRAP SEDIMENT FOREBAY
SPILLWAY PROFILE
FOR BIORETENTION AREA
NOT TO SCALE



TOP VIEW - OUTLET CONTROL STRUCTURE
FOR BIORETENTION AREAS WITH ISR
NOT TO SCALE



CAP W/ CONTROL ORIFICE
NOT TO SCALE

COMPONENT MATERIAL	% OF MIXTURE BY VOLUME	GRADATION OF MATERIAL	
		SIEVE NO.	% BY WEIGHT PASSING STANDARD SIEVE
BIORETENTION FILTER MEDIA OPTION A			
ASTM C-33 CONCRETE SAND	50-55		
LOAMY SAND TOPSOIL WITH FINES AS INDICATED	20-30	200	15 TO 25
MODERATELY FINE SHREDDED BARK OR WOOD FIBER MULCH WITH FINES AS INDICATED	20-30	200	<5

3/8" WASHED CRUSHED STONE*		3/4" WASHED CRUSHED STONE*	
SIEVE SIZE	% PASSING BY WIGHT	SIEVE SIZE	% PASSING BY WIGHT
1/2"	100	1"	100
3/8"	95-100	3/4"	90-100
#4	22-55	1/2"	15-55
		#10	0-5
*EQUIVALENT TO STANDARD WASHED STONE-SECTION 702 OF NHDOT STANDARD SPECIFICATIONS		*EQUIVALENT TO STANDARD WASHED STONE-SECTION 702 OF NHDOT STANDARD SPECIFICATIONS	

HYBRID BIORETENTION AREA MIX:

THE GRASS THAT IS PLANTED WITHIN A BIO-FILTRATION SYSTEM WITHIN THE BIO-MEDIA MUST CONSIST OF A COMBINATION OF WARM SEASON GRASS SEED AND COLD SEASON GRASS SEED IN ORDER FOR THE GRASS TO START GROWING FOR STABILIZATION AND CONTINUE GROWING IN THE SANDY WELL-DRAINED ENVIRONMENT. PLANTING SPECIFICATION WILL MEET REQUIREMENTS AS OUTLINED IN "VEGETATION NEW HAMPSHIRE SAND AND GRAVEL PITS" MIX 1 (WARM SEASON GRASSES) (15 LBS/AC) AND INCLUDE ANNUAL AND PERENNIAL RYE GRASS SEED (15 LBS/AC); THE NEW ENGLAND NATIVE WARM SEASON GRASS MIX (23 LBS/AC) BY NEW ENGLAND WETLAND PLANTS, INC.; RAIN GARDEN MIX 180 (15 LBS/AC & 15 LBS/AC OF RYE)/RAIN GARDEN GRASS MIX 180 (20 LBS/AC & 10 LBS/AC OF RYE) BY ERNST CONSERVATION SEEDS, OR APPROVED EQUAL.

- NOTES
- WHEN CONTRACTOR EXCAVATES BIORETENTION AREA TO SUBGRADE, DESIGN ENGINEER SHALL PERFORM SUBSURFACE EVALUATION PRIOR TO THE PLACEMENT OF ANY SELECT MATERIAL OR OTHER BACKFILL.
 - SOIL BIORETENTION FILTER MEDIA SHALL BE AS SHOWN ABOVE. "BIO-MEDIA" MEANS BIORETENTION FILTER MEDIA.
 - DO NOT PLACE THE BIORETENTION SYSTEM INTO SERVICE UNTIL THE BMP HAS BEEN PLANTED AND ITS CONTRIBUTING AREAS HAVE BEEN FULLY STABILIZED.
 - DO NOT DISCHARGE SEDIMENT-LADEN WATERS FROM CONSTRUCTION ACTIVITIES (RUNOFF WATER FROM EXCAVATION) TO THE BIORETENTION AREA DURING ANY STAGE OF CONSTRUCTION.
 - DO NOT TRAFFIC EXPOSED SOIL SURFACE WITH CONSTRUCTION EQUIPMENT. IF FEASIBLE, PERFORM EXCAVATIONS WITH EQUIPMENT POSITIONED OUTSIDE THE LIMITS OF INFILTRATION COMPONENTS OF THE SYSTEM.
 - WHERE BIORETENTION AREA BOTTOM IS UNLINED, IT TO BE ROTOTILLED PRIOR TO INSTALLING PEA GRAVEL OR COARSE SAND.
 - A PROFESSIONAL ENGINEER SHALL BE PRESENT DURING THE CONSTRUCTION OF THE RAIN GARDENS TO ENSURE THAT ALL OF THE CRITERIA ARE MET AND THAT A REPORT BE SUBMITTED TO NHDES WHEN CONSTRUCTION OF THE BIORETENTION AREAS ARE COMPLETED.

- MAINTENANCE REQUIREMENTS
- SYSTEMS SHOULD BE INSPECTED AT LEAST TWICE ANNUALLY, AND FOLLOWING ANY RAINFALL EXCEEDING 2.5 INCHES IN A 25-HOUR PERIOD, WITH MAINTENANCE OR REHABILITATION CONDUCTED AS A WARRANTED SUCH INSPECTION.
 - PRETREATMENT MEASURES SHOULD BE INSPECTED AT LEAST TWICE ANNUALLY, AND CLEANED OF ACCUMULATED SEDIMENT AS WARRANTED BY INSPECTION, BUT NO LESS THAN ONCE ANNUALLY.
 - AT LEAST ONCE ANNUALLY, SYSTEM SHOULD BE INSPECTED FOR DRAWDOWN TIME. IF BIORETENTION SYSTEM DOES NOT DRAIN WITHIN 72-HOURS FOLLOWING A RAINFALL EVENT, THEN A QUALIFIED PROFESSIONAL SHOULD ASSESS THE CONDITION OF THE FACILITY TO DETERMINE MEASURES REQUIRED TO RESTORE FILTRATION FUNCTION OR INFILTRATION FUNCTION. INCLUDING BUT NOT LIMITED TO REMOVAL OF ACCUMULATED OF SEDIMENTS OR RECONSTRUCTION OF FILTER MEDIA.
 - VEGETATION SHOULD BE INSPECTED AT LEAST ANNUALLY AND MAINTAINED IN HEALTHY CONDITION, INCLUDING PRUNING, REMOVAL, AND REPLACEMENT OF DEAD OR DISEASED VEGETATION, AND REMOVAL OF INVASIVE SPECIES.

- DESIGN REFERENCES:
- UNH STORMWATER CENTER
 - NEW HAMPSHIRE STORMWATER MANAGEMENT MANUAL, VOLUME 2, DECEMBER 2008 AS AMENDED.

BIORETENTION AREA NOTES

SUBDIVISION PLANS

TAX MAP 11 LOT 4

DETAILS

HUCKINS REVOCABLE TRUST SUBDIVISION
22 HILLSIDE DRIVE - STRAFFORD, NEW HAMPSHIRE

OWNED BY

BERTHA L. HUCKINS REVOCABLE TRUST

PREPARED FOR

BERTHA L. HUCKINS REVOCABLE TRUST

SCALE: NTS

MAY 9, 2023

Seacoast Division



Civil Engineers
Structural Engineers
Traffic Engineers
Land Surveyors
Landscape Architects
Scientists

170 Commerce Way, Suite 102
Portsmouth, NH 03801
Phone (603) 431-2222
Fax (603) 431-0910
www.tfmoran.com

47516.00	DR JUM FB	JCC	CADFILE	47516-00_DETAILS	C-11
----------	-----------	-----	---------	------------------	------

Copyright 2023 ©TFMoran, Inc.
48 Constitution Drive, Bedford, N.H. 03110

All rights reserved. These plans and materials may not be copied, duplicated, replicated or otherwise reproduced in any form whatsoever without the prior written permission of TFMoran, Inc.

This plan is not effective unless signed by a duly authorized officer of TFMoran, Inc.

